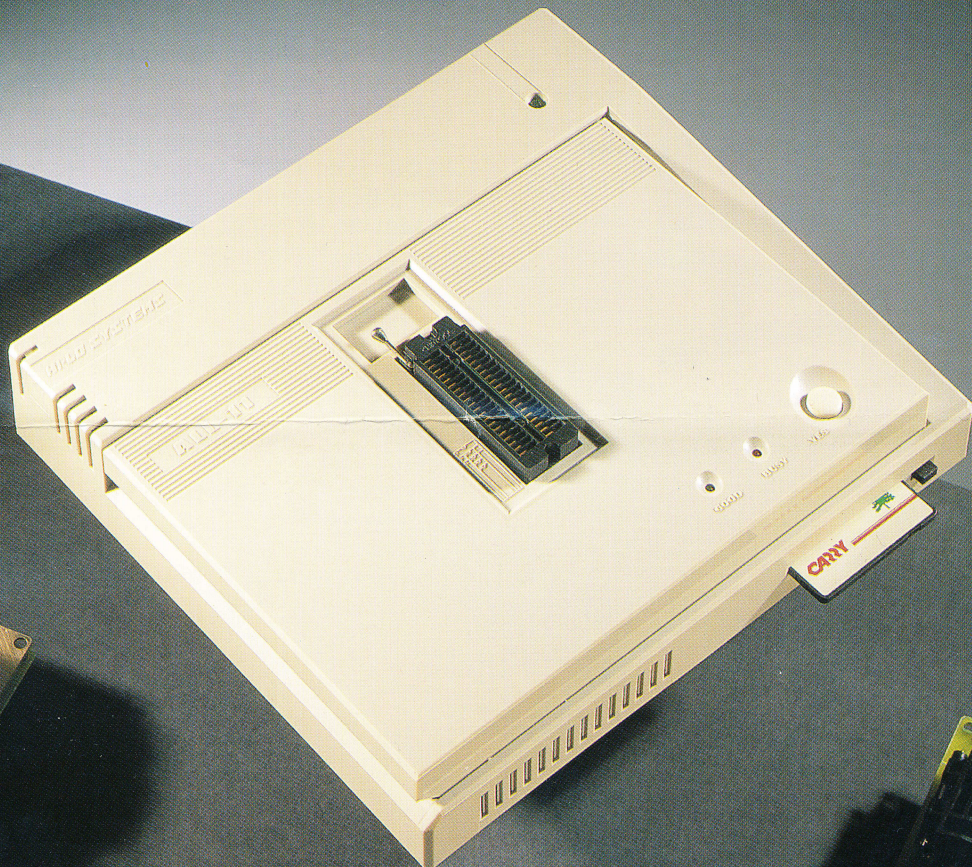


Universal Programmer

ALL-11



HI-LO SYSTEMS

windows version **ALL-11** UNIVERSAL and GANG PROGRAMMER

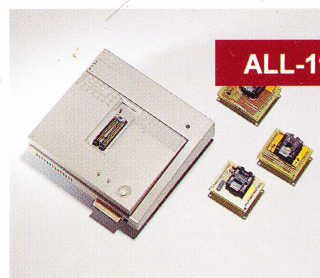
The ALL-11 supports programming just about every type of device with a programmable memory or configuration including EPROM, EEPROM, FLASH, PLD/CPLD/FPGA, microcontrollers, BPROM, Serial PROM, and much more.

The ALL-11 consists of a universal base and exchangeable PACK options. PACKs range from general purpose universal PACKs to multiple sockets gang programming PACKs.

The ALL-11 includes a high speed CPU and expandable memory buffer to meet programming needs today and into the future. Standard programmer memory is 1Mbit and is expandable in the field to up to 128M bytes. Even with only 1Mbit of memory installed in the programmer a cache system allows much larger EPROM and FLASH to be programmed.

A high speed serial port interface (up to 115K baud) connects the programmer to any desktop or laptop PC running Windows 3.1 or Windows 95. A USB port interface upgrade option will be available shortly. The software interface is a native Windows 3.x/95 application.

The ALL-11 features our new SMD SIMM module pin driver circuits which provide extremely accurate programming waveforms, high speed, high reliability and a compact form factor. ALL-11 pin drivers are fully programmable to support programming and testing of standard and low voltage device. The ALL-11 is powerful enough to perform demanding production tasks and compact enough to use for field engineering work.



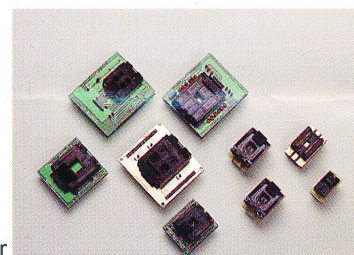
ALL-11 SUPPORTS OVER 3000 IC

The ALL-11 supports an expansive array of EPROM, EEPROM, FLASH, Serial PROM, BPROM, MPU/MCU/DSP, microcontrollers from

Atmel, Dallas, Hitachi, Intel, Microchip, Mitsubishi, Motorola, NEC, Philips, TI, Toshiba, WSI, Zilog and others.

The ALL-11 supports PAL, GAL, PEEL, EPLD, EPL, FPGA, CPLD from Altera, AMD, Atmel, Lattice, Lucent Technologies (AT & T), Motorola, TI, Xilinx, etc... The ALL-11 can perform functional vector tests on programmable logic devices as fast as 4ns.

Devices supported range from 8 pins to over 300 pins. Nearly all devices with 8-40 pins can be programmed directly by the ALL-11's 40 pin DIP socket. Adapters and converters are available to support nearly every type of IC package including PLCC, SOP, TSOP, QFP, TQFP, PGA, SOJ, and much more. Gang programming options are available for E/EPROM, FLASH, Serial PROM, PLD/CPLD, and microcontrollers.



Adapter and Converter

ALL-11 IS EASY TO OPERATE

The ALL-11's new Windows interface makes programming simple. Choose a device manufacturer and device type from a menu. Read in a file from a master device or load a file from the PC. Press 'B' to check if the device is blank, press 'P' to program the device, or press 'A' to use the Auto function. The Auto function displays all available functions to perform on the device (i.e. blank check, program, verify, program security, protect sectors, etc...). Simply check off the operations you want to perform. After all desired functions are selected the programmer can be operated by a single external key on the programmer.

The ALL-11 can process all popular file formats including Intel HEX, Motorola S-records, binary, JEDEC fuse map (.JED), Altera POF, and others. A full screen editor is provided to view or edit any address of the programming buffer in binary, ASCII, or Logic Fuse Map formats.

ALL-11 IS RELIABLE

The ALL-11 is a sixth generation universal programmer product. We have over 8 years experience designing universal programmers and we have an installed base of over 100,000 universal programmers. Close relations with all major IC manufacturers keep our engineers well informed of all the latest programming algorithm releases. Our algorithms have been tested and approved by AMD, Atmel, ICT, Macronix, Motorola, National Semiconductor, WSI and others. Over current protection circuits and reverse insertion detection protect your IC and the ALL-11. A self diagnostic test is included to verify correct operation of the hardware and to meet calibration requirements. The ALL-11 meets CE requirements and has been approved by TUV. Every ALL-11 is backed by a 1 year hardware warranty.

ALL-11 BACKED BY WORLDWIDE SERVICE AND SUPPORT

Over 100 distributors in over 50 countries support the ALL-11. New software updates are available by BBS, WEB, or email. Over 30 engineers are available to answer technical support questions and add support for new device types. New device support is added daily to keep up with all of your programming requirements.



ON/OFF Switch

Power Input
Universal AC Input Power Supply
(90 - 245 VAC, 47-67 Hz)

Serial/USB port
High speed serial port
(115K Baud) standard
or upgrade to USB port
(Universal Serial Bus)

Cooling Fan
Ensures stable operation
in harsh production
environments.

DIP40 socket

Nearly all DIP devices with 8 -40 pins can be programmed directly. Additional adapters can be plugged into the 40 pin DIP socket to support PLCC, QFP, PGA, SOP, TSOP,....and devices with 44 pins to over 300 pins. The DIP socket is designed to be easily replaced in production environments.

Power On LED

Good LED

LED ON indicates
an operation was
performed OK.

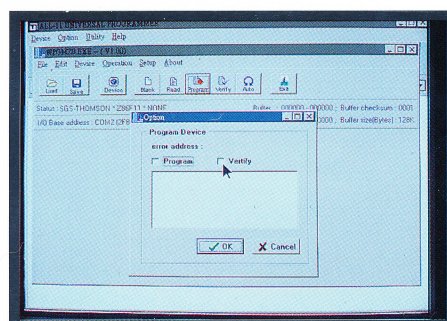
Busy LED
Indicates
programmer
operation is
active

Memory Card Slot

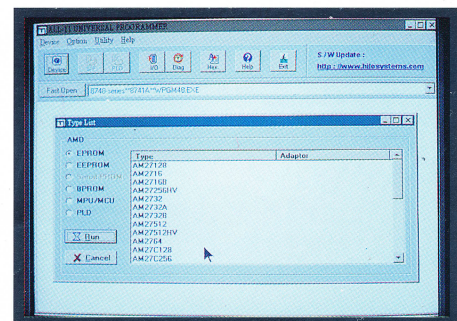
Allows programmer memory to be easily upgraded by the user in the field. Programmer memory can be expanded from 1Mbit to up to 128Mbits.

YES Key

Allows one key
operation for mass
production
programming.



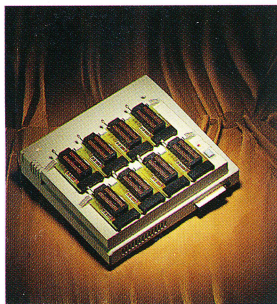
Main Menu



Access Menu

GANG-08

An optional GANG PACK for ALL-11P



The GANG-08 can support programming up to 8 EPROM, EEPROM FLASH, microcontrollers, GAL, Serial PROM, DSP, and other device types.

The GANG-08 has room for up to 8 interchangeable sockets. When you need to change to a new device family or package you simply change the sockets, not the whole programmer. Support is provided for all of the latest package styles including DIP, PLCC, SOP/SOIC, TSOP, SSOP, QFP, TQFP, MQFP, and others. We designed the system so customers pay only for the support needed. The expense and overhead of concurrent programming systems and device dedicated gang programmers is eliminated.

(Please see the Gang -08 catalog)

HI-LO SYSTEMS INTERNATIONAL

<http://www.hilosystems.com>

<http://www.hilosystems.com.tw>

Australia
HI-LO SYSTEMS
AUSTRALIA
TEL:+61-3-9720 5455
FAX:+61-3-9872 4876

Germany
HI-LO SYSTEMS
VERTRIEBS GMBH
TEL:+49-8071-5953-0
FAX:+49-8071-5953-88

Korea
HI-LO SYSTEMS
KOREA
TEL:+82-2-790 1214
FAX:+82-2-794 9736

United Kingdom
HI-LO SYSTEMS UK
TEL:+44-181-953-9292
FAX:+44-181-953-9299

HI-LO SYSTEMS INC

U.S.A.
44388 S.GRIMMER BLVD
FREMONT, CA 94538
TEL:+1-510-623-8860
FAX:+1-510-623-9925

HI-LO SYSTEM RESEARCH CO.,LTD

Taiwan
4F,NO.2,SEC.5,MING SHEN E.RD.
TAIPEI,TAIWAN,
TEL:886-2-7640215
FAX:886-2-7566403.

China
HI-LO SYSTEMS CO.,LTD
TEL:+86-21-6351-2310
FAX:+86-21-6351-2308

Holland
HI-LO SYSTEMS
NEDERLAND
TEL:+31-20-4122610
FAX:+31-20-4122611

Italy
HI-LO SYSTEMS
ITALIA
TEL:+39-543-795050
FAX:+39-543-796835

Sweden
HI-LO SWEDEN AB
TEL:+46-31-7096840
FAX:+46-31-491215

Electronic Specifications

- Includes high speed CPU and 1Mbit memory buffer as standard.
- A memory card slot accepts SRAM cards to expand the memory buffer from 1Mbit to higher densities up to 128M bytes.
- High Speed and compact pin driver circuits to support programming and testing of standard and low voltage IC. High speed serial port interface (up to 115K baud) works on (COM1, COM 2, COM3 or COM4). An even higher speed USB port (Universal Serial Bus) interface will be available shortly.

Function Specifications

Load file, Read Master, Program, Verify, Auto, ID Check, Checksum, Blank Check, Erase, Secure, Protect/Unprotect, Edit, File Transfer, Function Configuration, Self Test.

Electrical Requirements

Operating Voltage: 90 - 245 VAC
Frequency Range : 47-67 Hz
Power Consumption: 5V max 1A
12V max 1.5A

Physical and Environmental Specifications

Dimensions : 245 mm x 220 mm x 50 mm
Weight : 2kg
Temperature : 0 - 40C (50 - 105F)
Safety Standards: approved by TUV to meet CE requirements

Host System Requirements

- Any IBM or compatible 486/Pentium with a minimum 4MB extended memory.
- At least one serial port or a USB port for USB port models
- 5 MB of free hard disk space Windows 3.1/3.11/95 operating system
- 3 1/2" floppy disk drive

Ordering Information

ALL-11 : Includes ALL-11 programmer with a 40 pin DIP socket, D-25 cable (1M long), software for all supported devices and a user manual.

Optional :

Converters: Converters for nearly every package type with 8 pins to 44 pins for PLCC, QFP, TQFP, SOP, SOIC, TSOP, PGA, etc... (Please see the converter list.)

Adapters : Support high pin count devices with 44 pins to over 300 pins and devices with special requirements. Please see the adapter list.

GANG-08 : Includes GANG-08 GANG PACK(without HEAD), D-25 cable (1M long), and a user manual.

Optional :

Heads: HEAD for nearly every package type with 8 pins to over 100 pins for DIP, PLCC, QFP, TQFP, SOP, SOIC, TSOP, PGA, etc... (Please see the HEAD list.)

Windows logo are trademarks of Microsoft Corporation