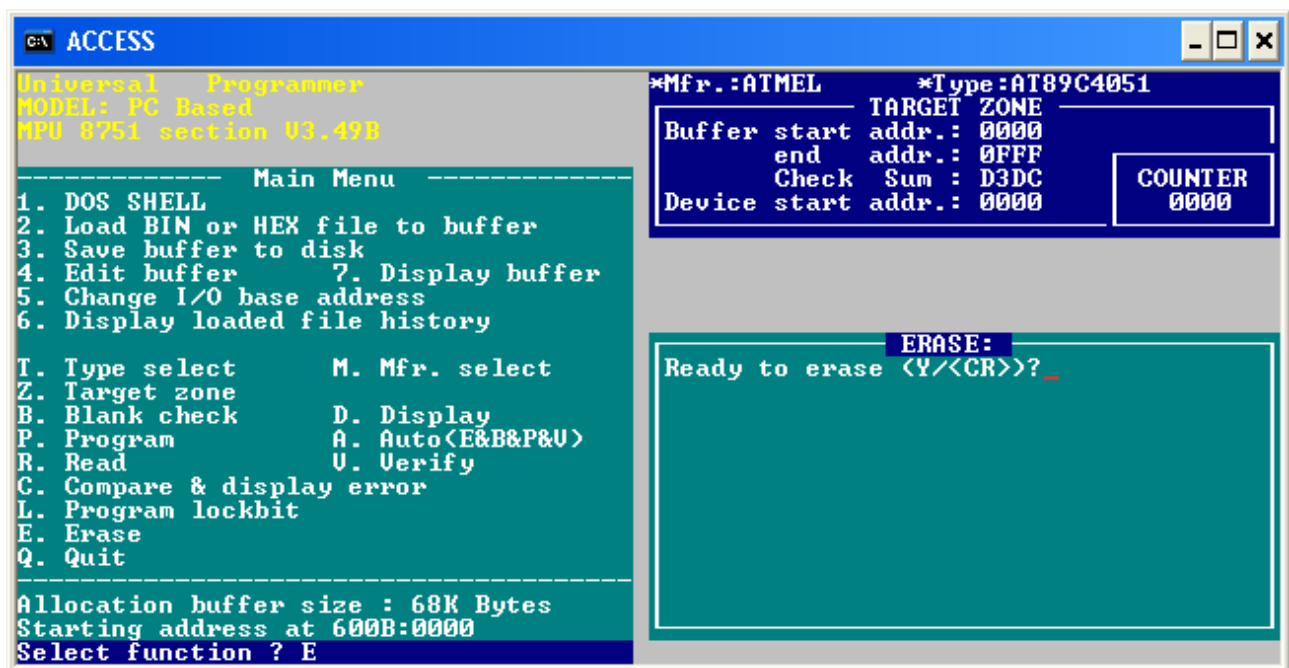


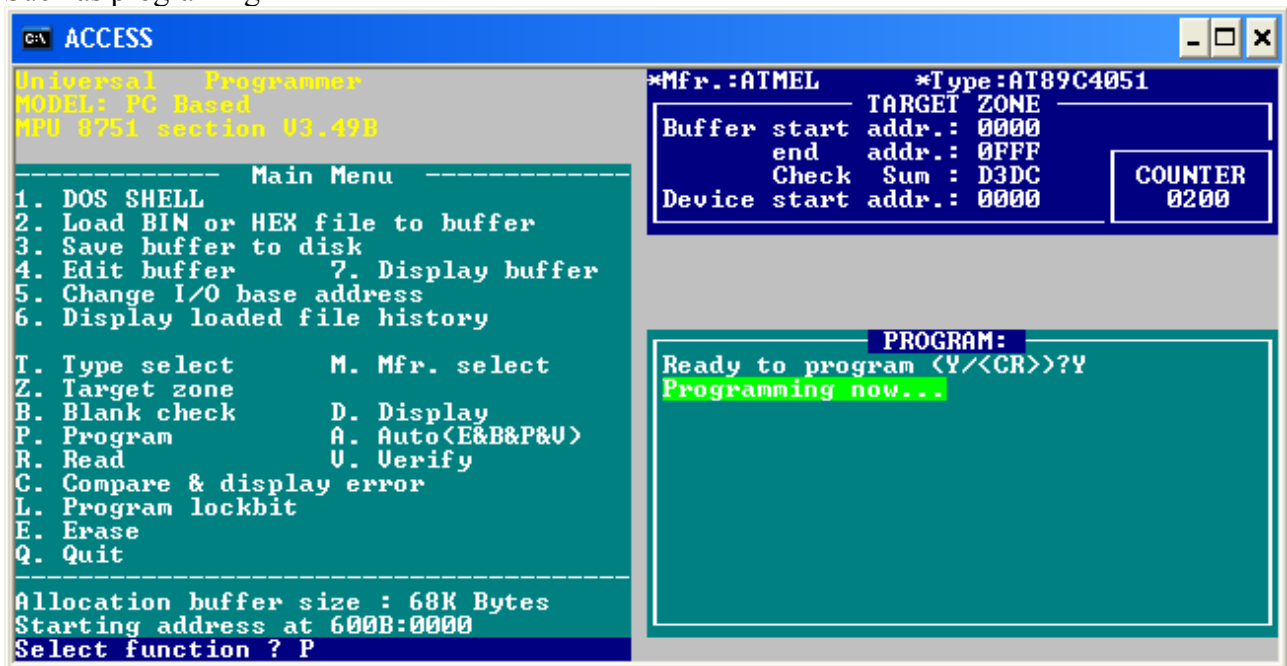
Screen as usual accessed through all03a access.exe 9.12



Push Y and just after that , push down and hold SPACE until end of erasing (until OK).

Same thing should be done for all operations.

Such as programing



Picture made during programming AT 89C4051 where space are released just to make alt+printscreen and again pushed. Thing is tollerable to such a timing issue. Window is active as You can see blue strip on the top of window.

IO driver:

