

PIEZOCERAMIC BUZZERS



Contents

	Page
● Introduction	2
● Makeup of piezoceramic buzzer products	2
● Piezoceramic diaphragms.....	3
● Piezoceramic sounders.....	4
● Piezoceramic buzzers(EB-type).....	9
● Piezoceramic buzzers(U-type).....	15
● How to use piezoceramic buzzers	17
● Piezoceramic buzzer measurement method	18
● Standard conditions for reliability tests	19
● ⚠ Caution	19

■ Introduction

FDK piezoceramic buzzers generate sound through the bending vibrations of a thin metal plate adhered to a piezoceramic disc. These buzzers feature a low power consumption, a safe, spark-free and non-contact structure, and a small size and light weight for an easy mounting to printed circuit boards. As a result, an increasing number of piezoceramic buzzers are now used to generate an artificial voice in combination with voice synthesizing ICs. To produce high-quality piezoceramic buzzers, FDK has capitalized on many years of piezoceramics production and outstanding ceramic processing technologies and thin film forming techniques. By adding a sophisticated audio know-how to this manufacturing expertise, FDK offers a large array of electronic tone generating products, such as piezoceramic diaphragms, sounders and buzzers, to meet loud sound outputs, wide frequency ranges, and many other requirements.

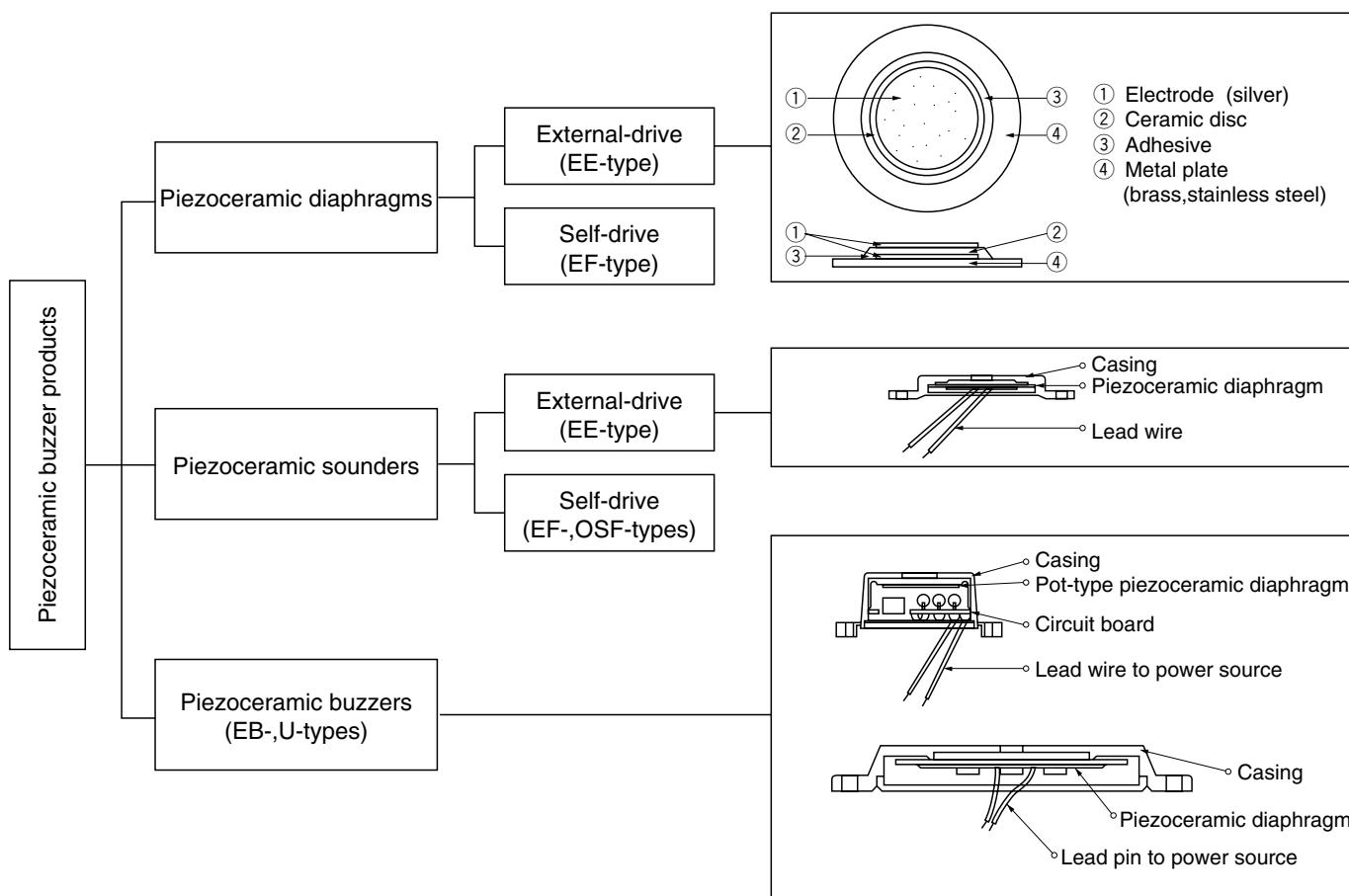
Features

- Use of high-performance piezoceramic elements to meet loud sound volume and wide frequency range needs.
- High quality achieved by integrated in-house production, from piezoceramic materials to buzzers.
- Clear, pleasant electronic tone.
- Reliable, effective operation in a wide variety of equipment and ambient conditions.
- A wide, convenient selection from elements to complete buzzer products.

Applications

- **Consumer electronic appliances:** Refrigerators, microwave ovens, washing machines, electric fans, VCRs, air conditioners, bath heaters, sewing machines
- **Clocks and toys:** Digital clocks and watches, alarm clocks, calculators, game machines, greeting cards
- **Office equipment:** Photocopiers, typewriters, cash registers, personal computers, facsimiles
- **Automotive instruments:** Speed alarms; reverse drive buzzers; light, oil, battery, seatbelt check sounders
- **Safety and security equipment:** Fire alarms, burglar alarms, gas leakage alarms, keyless entry
- **Other electronic equipment:** Vending machines, automatic controllers, bicycle horns, telephones, cameras, strobos

■ Makeup of piezoceramic buzzer products



※Please refer to page 17 for the difference between external-drive type and self-drive type.

■ Piezoceramic diaphragms

●How piezoceramic diaphragms are named



- ① EE: External-drive type
EF: Self-drive type
② Outer diameter of metal plate
in mm
③ Shape code
④ Resonant frequency in 0.1 kHz
⑤ Terminal code

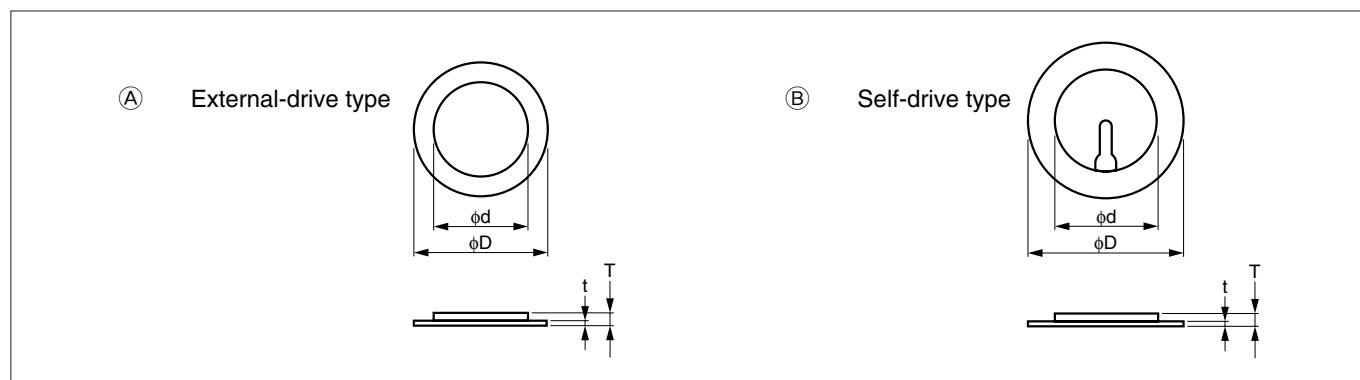
●External-drive type diaphragm rating

Parts number	Electrical characteristics					Dimensions (mm)				Shape	Metal plate material	Weight (g)
	Resonant frequency (kHz)	Resonant resistance (Ω max.)	Capacitance (pF)	Max. input voltage (Vp-p max.)	Rated working temperature range ($^{\circ}\text{C}$)	Metal plate outer diameter (ϕD)	Piezoceramic element outer diameter (ϕd)	Total thickness (T)	Metal plate thickness (t)			
EE13A-70A	7.0 \pm 0.5	400	10,000 \pm 30%	30	-20 to +60	13	9	0.22	0.1	Ⓐ	Brass	0.2
EE20A-63A	6.3 \pm 0.6	300	10,000 \pm 30%	30	-20 to +60	20	14	0.43	0.2	Ⓐ	Brass	0.8
EE27A-39A	3.9 \pm 0.5	200	20,000 \pm 30%	30	-20 to +60	27	19	0.48	0.25	Ⓐ	Brass	1.6
EE35A-30A	3.0 \pm 0.5	200	32,000 \pm 30%	30	-20 to +60	35	25	0.58	0.3	Ⓐ	Brass	3.4

●Self-drive type diaphragm rating

Parts number	Electrical characteristics					Dimensions (mm)				Shape	Metal plate material	Weight (g)
	Resonant frequency (kHz)	Resonant resistance (Ω max.)	Capacitance (pF)	Max. input voltage (Vp-p max.)	Rated working temperature range ($^{\circ}\text{C}$)	Metal plate outer diameter (ϕD)	Piezoceramic element outer diameter (ϕd)	Total thickness (T)	Metal plate thickness (t)			
EF27A-41A	4.1 \pm 0.5	300	18,000 \pm 30%	30	-20 to +60	27	19	0.48	0.25	Ⓑ	Brass	1.6
EF35A-30A	3.0 \pm 0.5	200	30,000 \pm 30%	30	-20 to +60	35	25	0.58	0.3	Ⓑ	Brass	3.4

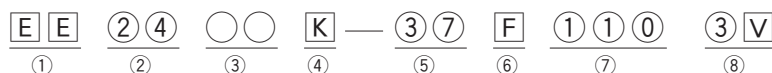
●Shapes



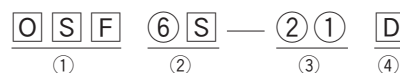
Piezoceramic sounders

How sounders are named

[EE- and EF-types]



[OSF-type]



① EE: External-drive type

EF: Self-drive type

② Outer diameter of casing in mm

③ Height: Approx. height in mm when mounted

④ Shape code

⑤ Oscillating frequency in 0.1 kHz

⑥ Terminal code

⑦ Lead wire length: Length in mm from external surface of casing (omitted when lead pins)

⑧ Rated input voltage: Voltage for measuring of output sound pressure; for operating voltage, refer to max. input voltage.

① Piezoceramic sounder: General name for OSF-type sounders

② Shape code

③ Dimensions: Outer diameter of diaphragm in mm

④ Series code

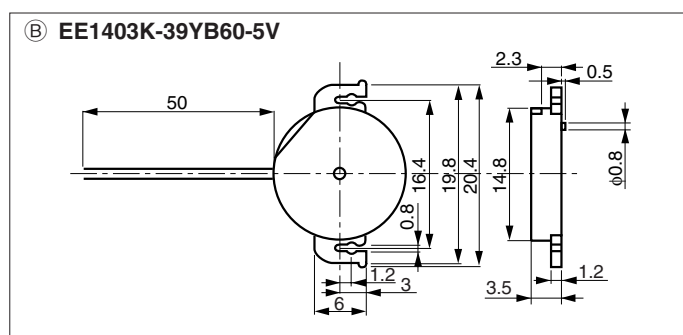
External-drive type sounder rating

(Measurement condition: 25°C±2°C, 45~60% RH)

Parts number	Electrical characteristics					Shapes and structures					Weight (g)
	Output sound pressure (dB min.) (Measurement condition)	Capacitance (pF)	Max input voltage (Vp-p max.)	Rated working temperature range (°C)	Dimensions (mm)		Shape	Terminal	Casing color		
					Outer diameter	Height					
EE1403K-39YB60-5V	65 $\left(\begin{array}{l} 3.9\text{kHz square wave} \\ 5\text{Vp-p, 10cm} \end{array} \right)$	9,000±30% (1kHz)	25	−20 to +60	φ14.8	3.5	Ⓑ	Lead wire	Black	0.5	
EE1707K-40R-3V	73 $\left(\begin{array}{l} 4.096\text{Hz square wave} \\ 3\text{Vp-p, 10cm} \end{array} \right)$	9,000±30% (1kHz)	30	−20 to +70	φ17	8	Ⓒ	Lead pin	Black	1.3	
EE2108K-40R-3V	75 $\left(\begin{array}{l} 4.096\text{Hz square wave} \\ 3\text{Vp-p, 10cm} \end{array} \right)$	14,000±30% (1kHz)	30	−20 to +70	φ21	8.2	Ⓓ	Lead pin	Black	2.2	
EE2109K-25R-12V	85 $\left(\begin{array}{l} 2.5\text{kHz square wave} \\ 12\text{Vp-p, 10cm} \end{array} \right)$	20,000±30% (1kHz)	30	−20 to +70	φ21 (24.5)	9	Ⓔ	Lead pin	Black	2.4	
EE2115K-28R-12V	85 $\left(\begin{array}{l} 2.8\text{kHz square wave} \\ 12\text{Vp-p, 10cm} \end{array} \right)$	20,000±30% (1kHz)	30	−30 to +85	φ21 (24.5)	9	Ⓕ	Lead pin	Black	2.2	
EE24K-37F110-3V	75 $\left(\begin{array}{l} 4.096\text{Hz square wave} \\ 3\text{Vp-p, 10cm} \end{array} \right)$	10,000±30% (1kHz)	30	−20 to +60	φ24	4.5	Ⓖ	Lead wire	Black	2.3	
EE30K-35F80-3V	75 $\left(\begin{array}{l} 3.5\text{kHz square wave} \\ 3\text{Vp-p, 10cm} \end{array} \right)$	20,000±30% (1kHz)	30	−10 to +60	φ30	5.5	Ⓗ	Lead wire	Black	4.0	
EE3314K-10R-12V	75 $\left(\begin{array}{l} 1\text{kHz square wave} \\ 12\text{Vp-p, 10cm} \end{array} \right)$	56,000±30% (120Hz)	30	−20 to +70	φ33.5	14	Ⓘ	Lead pin	Black	5.2	
EE3320K-10R-12V	75 $\left(\begin{array}{l} 1\text{kHz square wave} \\ 12\text{Vp-p, 10cm} \end{array} \right)$	56,000±30% (120Hz)	30	−20 to +70	φ33.5	14	⓵	Lead pin	Black	5.3	
EE3406K-10R-60V	80 $\left(\begin{array}{l} 1\text{kHz square wave} \\ 30\text{Vp-p, 1m} \end{array} \right)$	38,000±30% (120Hz)	60	−20 to +70	φ34	6.3	Ⓚ	Lead pin	Black	3.3	

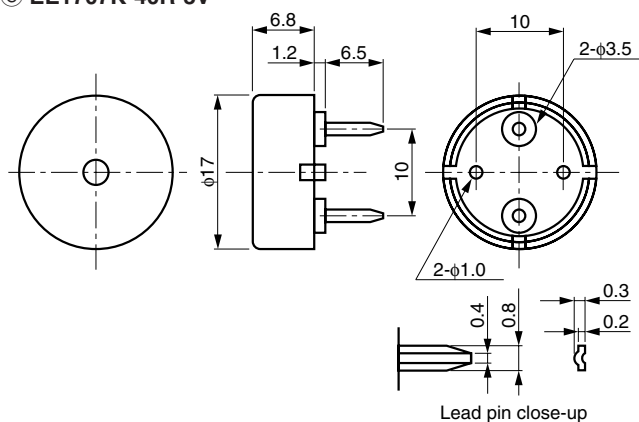
Although rated power supply voltage is shown at the end of parts number, refer to the column of maximum input voltage for operation securing voltage.

External-drive type sounder shapes

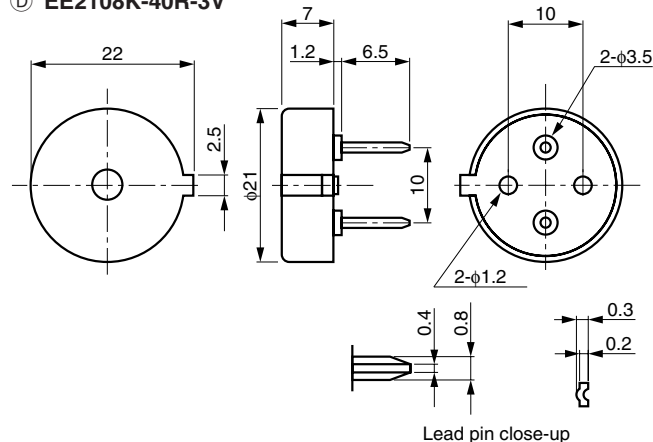


External-drive type sounder shapes

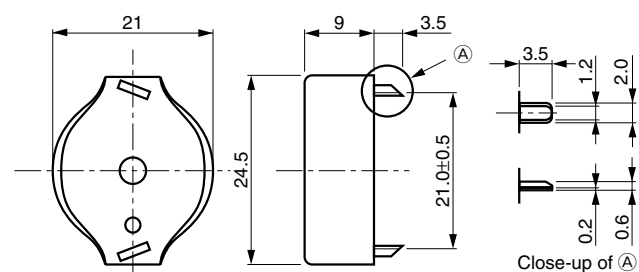
Unit=mm

● EE1707K-40R-3V


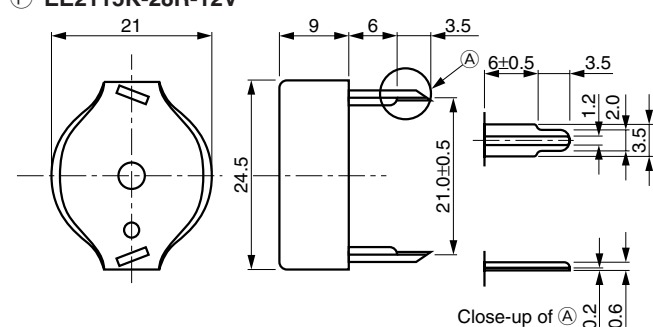
Lead pin close-up

● EE2108K-40R-3V


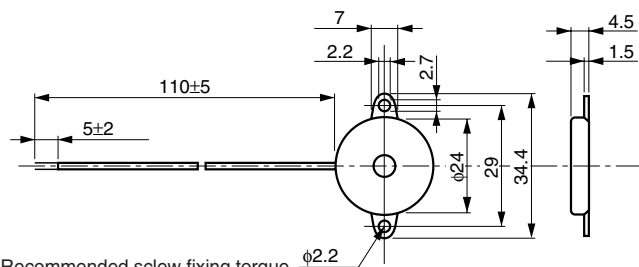
Lead pin close-up

● EE2109K-25R-12V


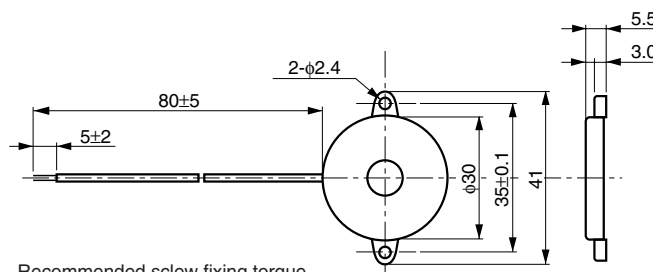
Close-up of A

● EE2115K-28R-12V


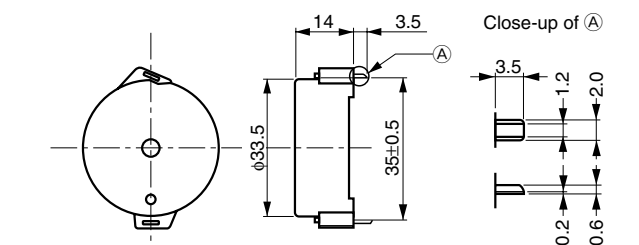
Close-up of A

● EE24K-37F110-3V


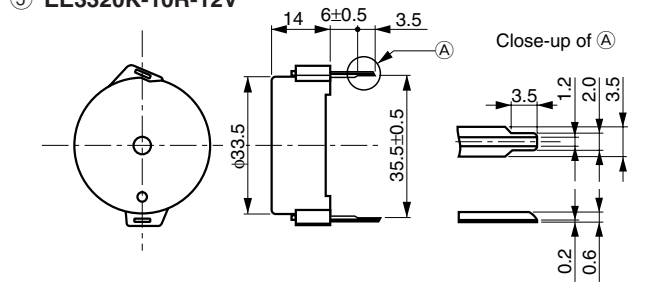
Recommended screw fixing torque
M2 round headed small screw: 2.0 kg fcm max.

● EE30K-35F80-3V


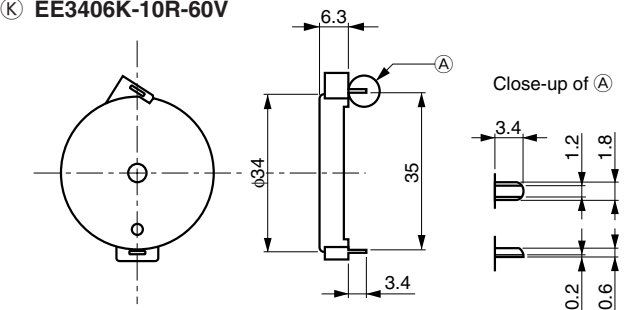
Recommended screw fixing torque
M2 round headed small screw: 2.0 kg fcm max.

● EE3314K-10R-12V


Close-up of A

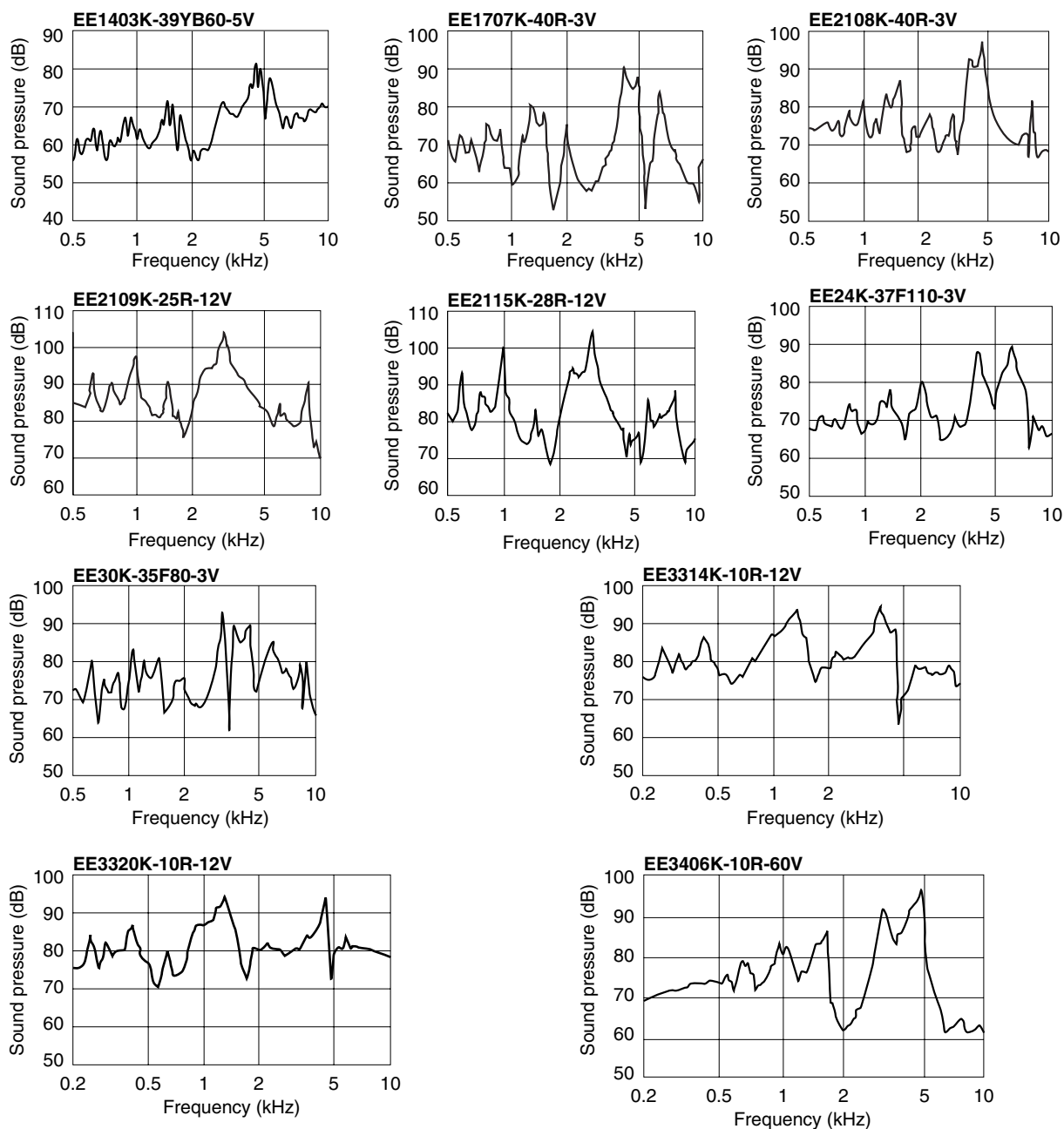
● EE3320K-10R-12V


Close-up of A

● EE3406K-10R-60V


Close-up of A

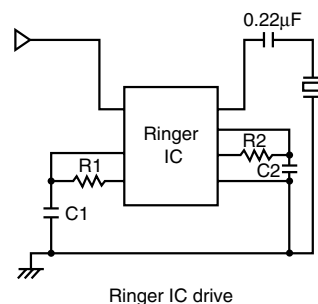
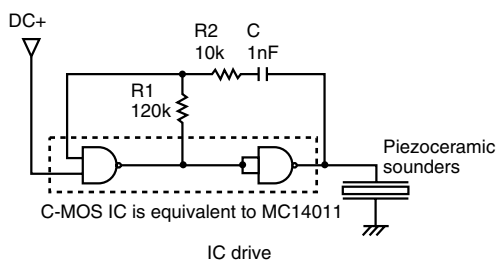
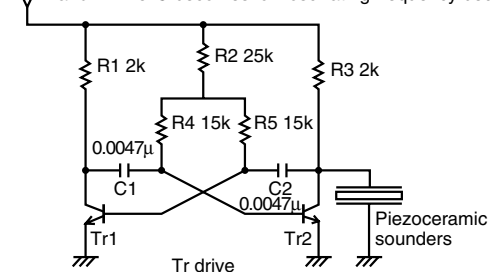
●External-drive type sounders: sound pressure vs. frequency



●Example of recommended external-drive type sounder circuit

DC+ If R2 & C becomes high oscillating frequency becomes low,
and if R2 & C becomes low oscillating frequency becomes high.

By changing of R2 & C, oscillating frequency changes.



●Self-drive type sounder rating

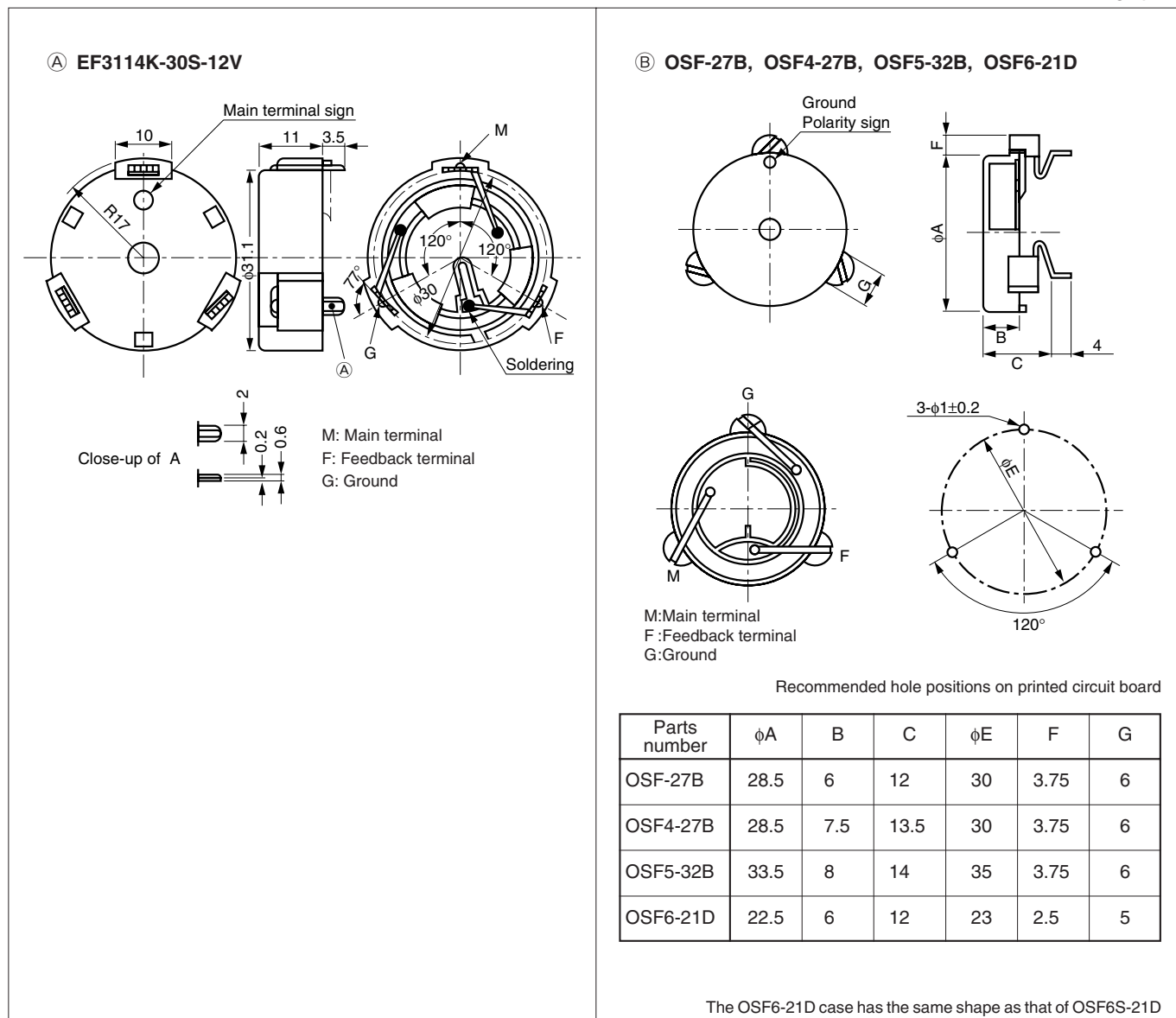
(Measurement condition: 25°C±2°C, 45~60% RH)

Parts number	Electrical characteristics							Shapes and structures					Weight (g)
	Oscillation sound	Output sound pressure (dB min.) (Measurement condition)	Oscillating (kHz)	Current Consumption (mA max.)	Rated power supply voltage (VDC)	Operating voltage (VDC)	Rated working temperature range (°C)	Dimensions (mm)		Shape	Terminal	Casing color	
EF3114K-30S-12V	Continuous	75 (12VDC, 1m)	3.0±0.5	10	12	3 to 18	-20 to +60	φ31.1	11	(A)	Lead pin	Black	5.1
OSF-27B	Continuous	77 (12VDC, 1m)	3.3±0.4	10	12	6 to 20	-20 to +70	φ28.5	12	(B)	Lead pin	Ivory	3.3
OSF2-27B	Continuous	77 (12VDC, 1m)	3.3±0.4	10	12	6 to 20	-20 to +70	φ28.5	15	(C)	Lead pin	Ivory	3.3
OSF3-27B	Continuous	75 (12DVC, 1m)	2.9±0.5	10	12	3 to 18	-20 to +70	φ28.5	16.5	(C)	Lead pin	Ivory	3.5
OSF4-27B	Continuous	75 (12VDC, 1m)	2.9±0.5	10	12	6 to 18	-20 to +70	φ28.5	13.5	(B)	Lead pin	Ivory	3.6
OSF5-32B	Continuous	90 (24VDC, 1m)	2.5±0.5	30	24	15 to 33	-20 to +70	φ33.5	14	(B)	Lead pin	Black	5
OSF6-21D	Continuous	70 (12DVC, 1m)	3.7±0.5	10	12	3 to 18	-20 to +70	φ22.5	12	(B)	Lead pin	Gray	1.7
OSF6S-21D	Continuous	73 (12VDC, 1m)	3.6±0.5	10	12	3 to 18	-20 to +70	φ22.5	12	(D)	Lead pin	Gray	1.8

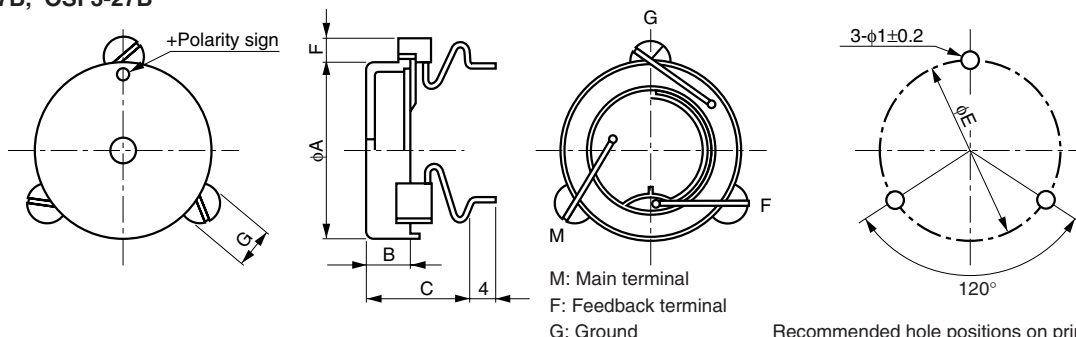
Above data were obtained by measurement using FDK's test circuits.
Please refer to each product specification about circuit and components.

●Self-drive type sounder shapes

Unit=mm



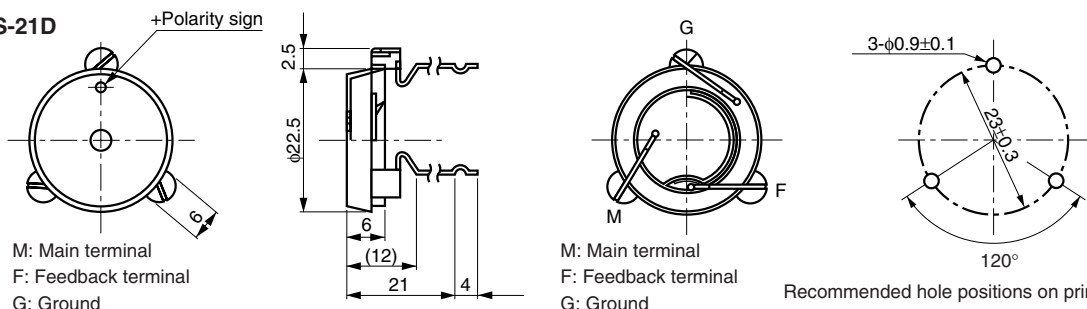
© OSF2-27B, OSF3-27B



Parts No.	Dimensions	ϕA	B	C	ϕE	F	G
OSF2-27B		28.5	6	15	30	3.75	6
OSF3-27B		28.5	7.5	16.5	30	3.75	6

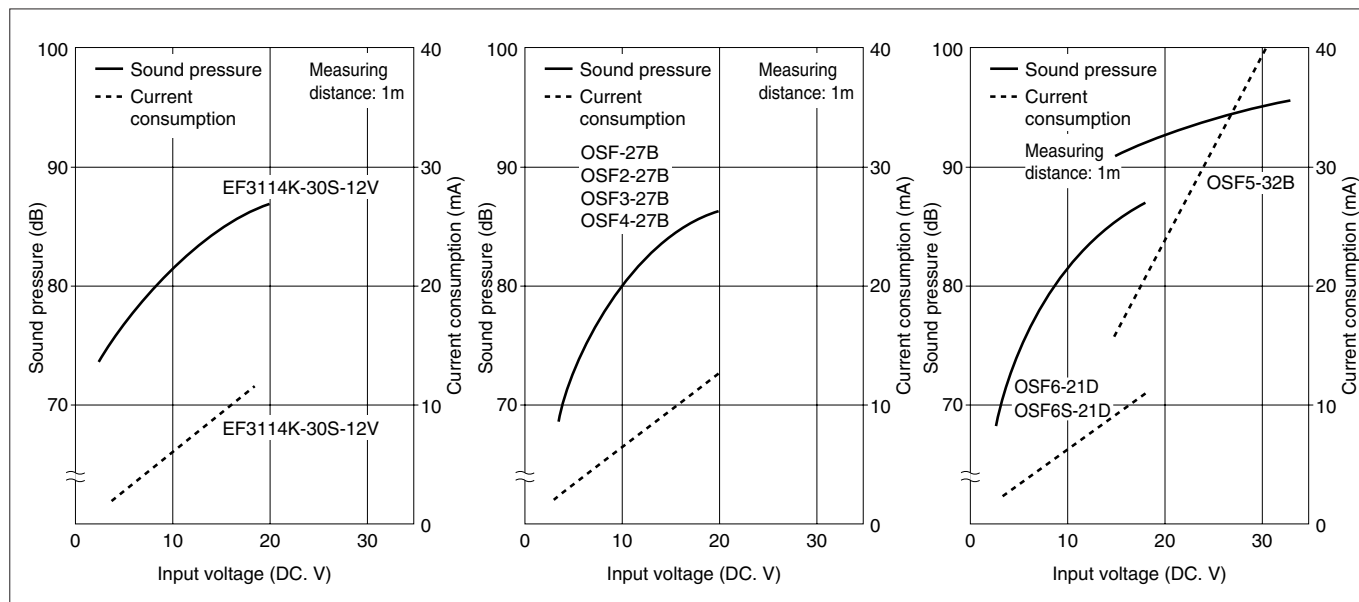
Recommended hole positions on printed circuit board

© OSF6S-21D

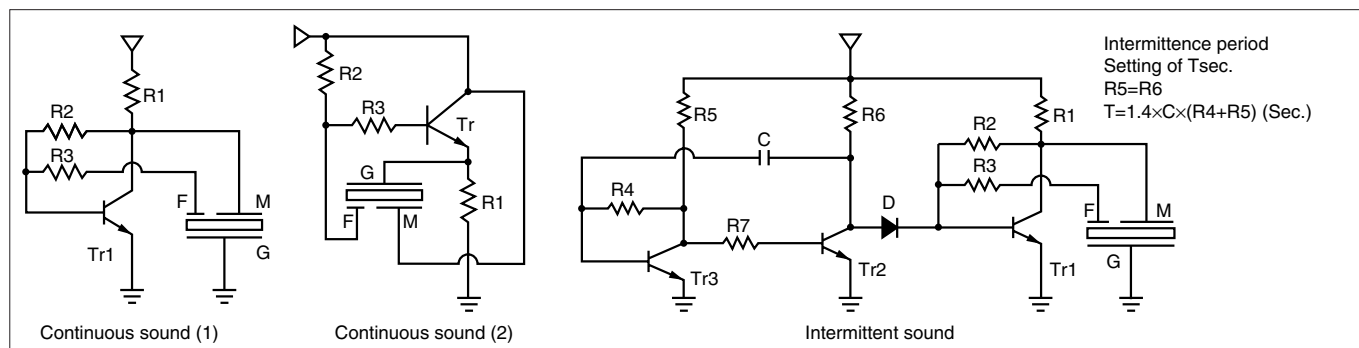


Recommended hole positions on printed circuit board

●Self-drive type sounders: sound pressure vs. input voltage



●Example of recommended self-drive type sounder circuit



Piezoceramic buzzers (EB-type)

How buzzers are named

[EB-type]



- ① Piezoceramic buzzer: General name for EB-type buzzers
- ② Outer dimensions: Approx. outer diameter of casing in mm
- ③ Height: Approx. height in mm when mounted
- ④ Shape code
- ⑤ Oscillating frequency in 0.1 kHz
- ⑥ Oscillation sound: C(continuous sound), I (intermittent sound)
- ⑦ Special specification: · · K: washable
- ⑧ Lead wire length: Length in mm from external surface of casing (omitted when lead pins)
- ⑨ Rated power supply voltage: · · Voltage for measuring of sound pressure etc.; for operation securing voltage, refer to operating voltage column.

EB-type buzzer rating

(Measurement condition: 25°C±2°C, 45~60% RH)

Parts number	Electrical characteristics							Shapes and structures					Weight (g)
	Oscillation Sound	Sound pressure (dB min.) (Distance:m)	Oscillating frequency (kHz)	Current consumption (mA max.)	Rated power supply voltage (DC.V)	Operating voltage (DC.V)	Rated working temperature range (°C)	Dimensions (mm)		Shape	Terminal	Casing color	
								Outer diameter	Height				
EB20A-35CW140-12V	Continuous	70(0.3)	3.5±0.5	4	12	2.4to20	−10to+60	φ22	11.5	Ⓐ	Lead wire	Black	4.2
EB20E-35C-12V	Continuous	70(0.3)	3.5±0.5	4	12	2.4to20	−20to+60	φ23	12	Ⓑ	Lead pin	Black	3.1
EB20Z-32C-9V	Continuous	80(0.3)	3.2±0.5	15	9	2.4to12	−10to+80	φ23	12.5	Ⓒ	Lead pin	Black	4.4
EB2210A-38C-12V	Continuous	75(0.3)	3.8±0.5	10	12	2.4to24	−10to+60	φ22.6	9.5	Ⓓ	Lead pin	Black	2.5
EB23A-30C-12V	Continuous	75(0.3)	3.0±0.5	8	12	2.4to32	−20to+60	φ23.5	13.5	Ⓔ	Lead pin	Black	3.2
EB23B-30C140-12V	Continuous	75(0.3)	3.0±0.5	8	12	2.4to32	−40to+60	φ23.5	13.5	Ⓕ	Lead wire	Black	3.0
EB2505A-31C-12V	Continuous	70(0.3)	3.1±0.5	8	12	3to20	−20to+70	φ25	5	Ⓖ	Lead pin	Black	1.9
* EB2505A-31CK-12V	Continuous	70(0.3)	3.1±0.5	8	12	3to20	−20to+70	φ25	5	Ⓗ	Lead pin	Black	2.0
EB2509A-27C-12V	Continuous	70(0.3)	2.7±0.5	15	12	2.4to20	−20to+70	φ25.5	9.1	Ⓘ	Lead pin	Black	3.2
EB2617A-25C-12V	Continuous	70(0.3)	2.6±0.5	10	12	2.4to28	−30to+80	φ26	17.3	Ⓙ	* connection terminal	Black	5.2
EB30B-31C-9V	Continuous	70(1.0)	3.1±0.5	12	9	2.4to32	−20to+60	φ31.5	19.5	Ⓚ	Lead pin	Black	7.4
EB30D-31C150-9V	Continuous	70(1.0)	3.1±0.5	12	9	2.4to32	−20to+60	φ31.5	19.5	Ⓛ	Lead wire	Black	8.3
EB3105A-30C140-12V	Continuous	70(0.3)	3.0±0.5	8	12	2.4to15	−20to+60	φ31	5	Ⓜ	Lead wire	Black	3.9
EB3105A-30C-12V	Continuous	70(0.3)	3.0±0.5	8	12	2.4to15	−20to+60	φ31	5	Ⓝ	Lead pin	Black	4.9
EB3120A-35C150-12V	Continuous	90(1.0)	3.5±0.5	15	12	3to20	−20to+80	φ31.5	19.5	Ⓛ	Lead wire	Blue	9.5
EB4015A-30C150-9V	Continuous	80(1.0)	3.0±0.5	15	9	3to12	−20to+60	φ40	15.5	Ⓞ	Lead wire	Black	13.1
EB4015A-30C-9V	Continuous	80(1.0)	3.0±0.5	15	9	3to12	−20to+60	φ40	15.5	Ⓟ	Lead pin	Black	13.0
EB4015B-28C150-24V	Continuous	85(1.0)	2.8±0.5	20	24	3to28	−20to+60	φ40	15.5	Ⓞ	Lead wire	Black	13.7
EB4015B-28C-24V	Continuous	85(1.0)	2.8±0.5	20	24	3to28	−20to+60	φ40	15.5	Ⓟ	Lead pin	Black	13.7
EB4015B-28 I 150-24V	Intermittent	85(1.0)	2.8±0.5	25	24	5to28	−20to+60	φ40	15.5	Ⓞ	Lead wire	Black	13.7
EB4015C-30C150-24V	Continuous	90(1.0)	3.0±0.5	20	24	3to28	−20to+60	φ40	15.5	Ⓞ	Lead wire	Black	13.7
EB5838A-27C180-12V	Continuous	92(1.0)	2.7±0.5	30	12	6to16	−30to+70	φ58	37	Ⓞ	Lead wire	Black	62.0

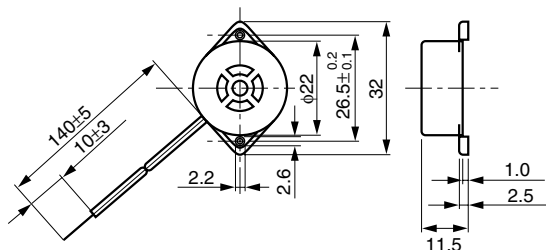
* The condition where the "anti-liquid seal" on the sound hole is removed.

* Frequency of intermittent sound : 100±50msec.

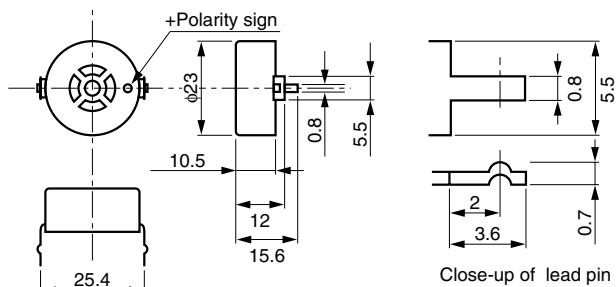
* As EB2617A-25C-12V has electric connection terminal in the bottom of the fixing hole, fixing of buzzer and electric connecting can be done at the same time.

●EB-type buzzer shapes

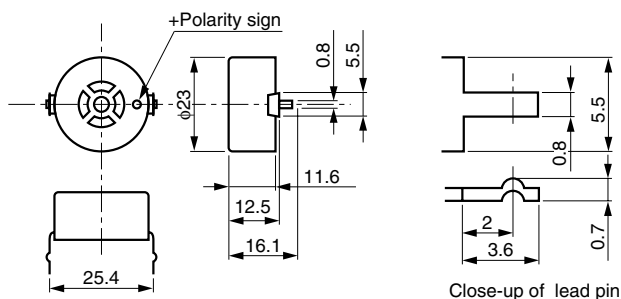
Unit=mm

① EB20A-35CW140-12V


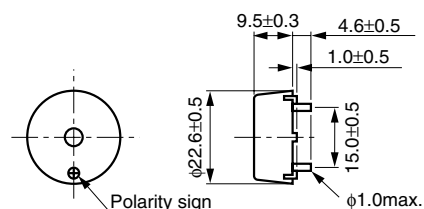
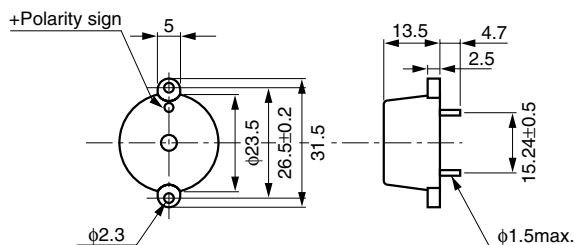
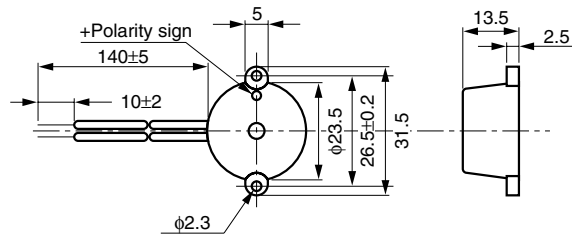
Recommended screw fixing torque
M2 round headed small screw: 0.5kgfcm max.
Lead wire Red(+), White(-)

② EB20E-35C-12V


Close-up of lead pin

③ EB20Z-32C-9V


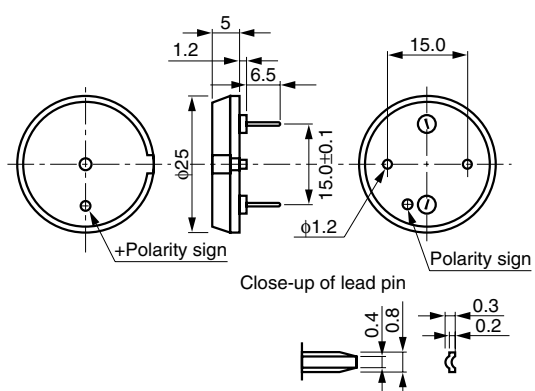
Close-up of lead pin

④ EB2210A-38C-12V

⑤ EB23A-30C-12V

⑥ EB23B-30C140-12V


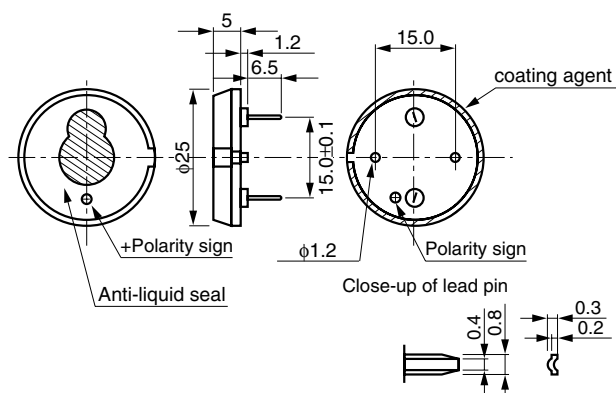
Recommended screw fixing torque
M2 round headed small screw: 0.5kgfcm max.
Lead wire Red(+), Black(-)

Unit=mm

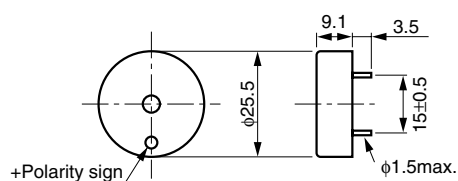
⑥ EB2505A-31C-12V



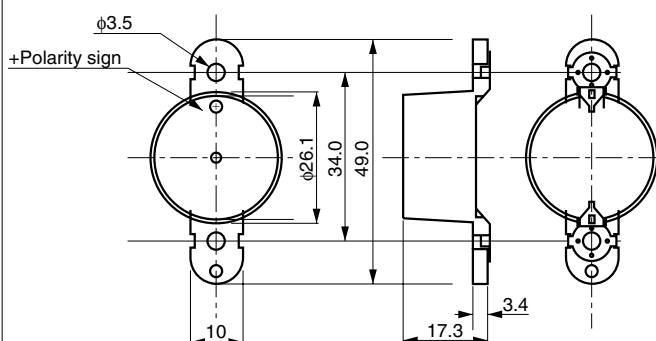
⑦ EB2505A-31CK-12V



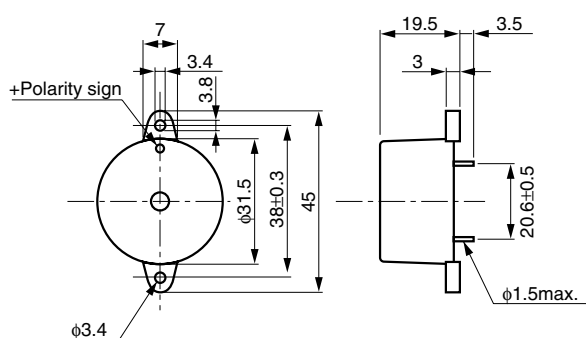
① EB2509A-27C-12V



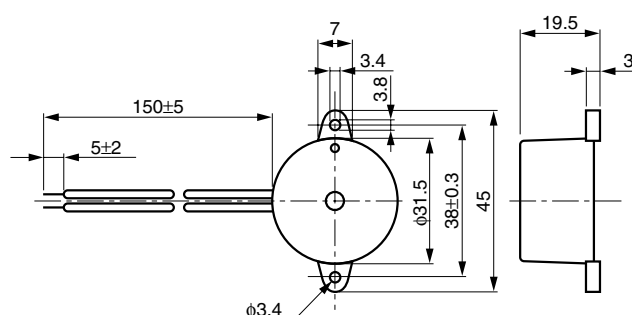
② EB2617A-25C-12V



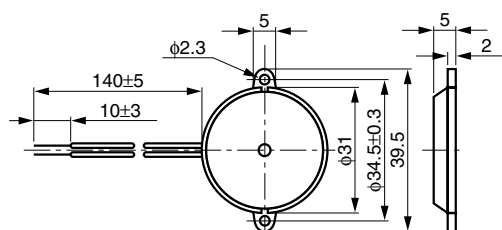
③ EB30B-31C-9V



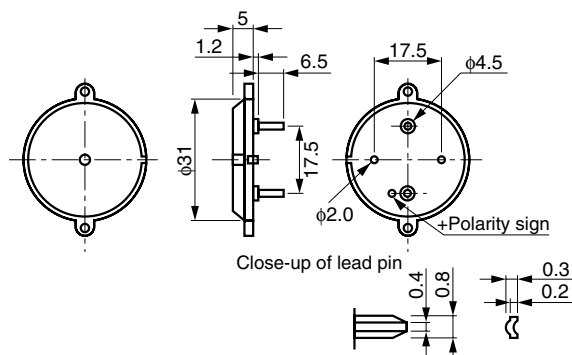
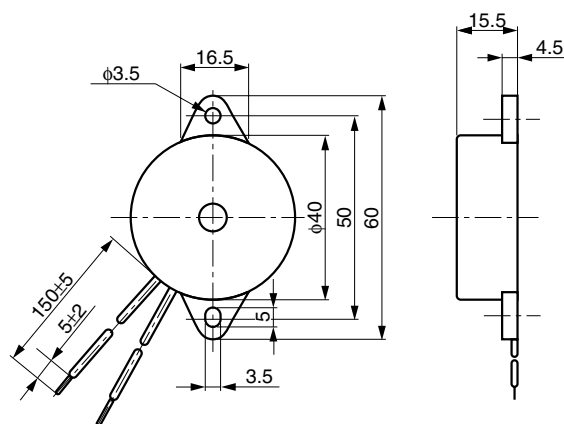
④ EB30D-31C150-9V or EB3120A-35C150-12V



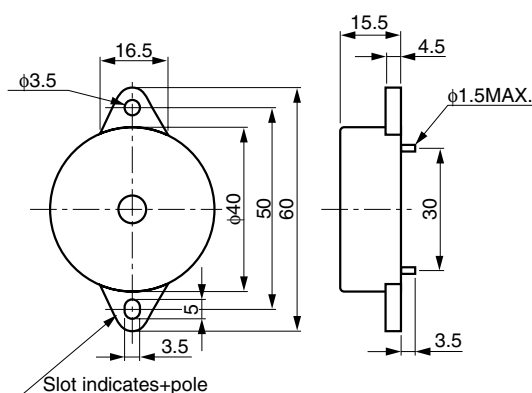
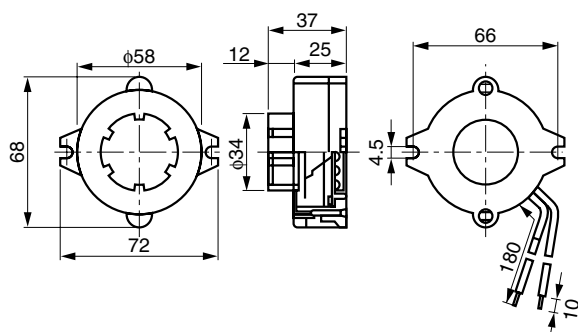
Recommended screw fixing torque
M3 round headed small screw: 3.0kgfcm max.
Lead wire Red(+), Black(-)

Ⓜ EB3105A-30C140-12V


Recommended screw fixing torque
M2 round headed small screw: 0.5kgfcm max.
Lead wire Red(+), Black(-)

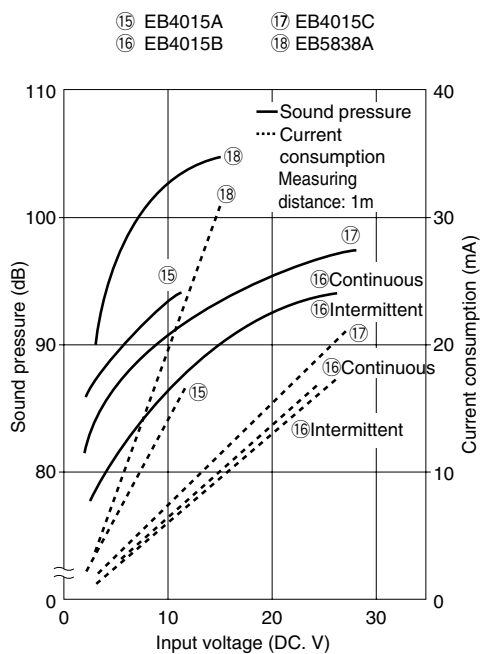
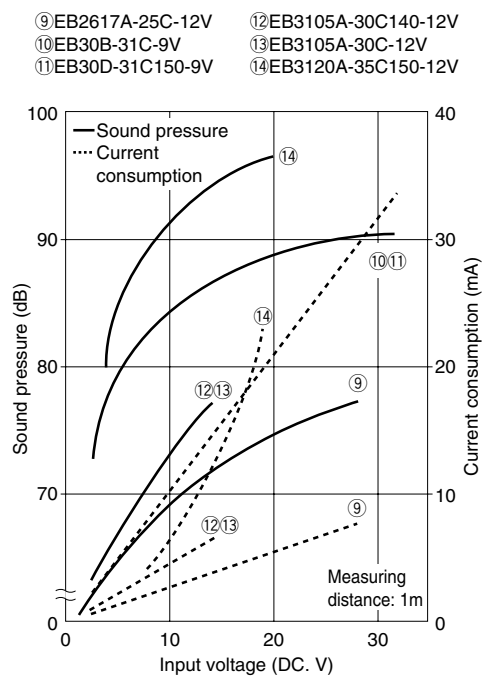
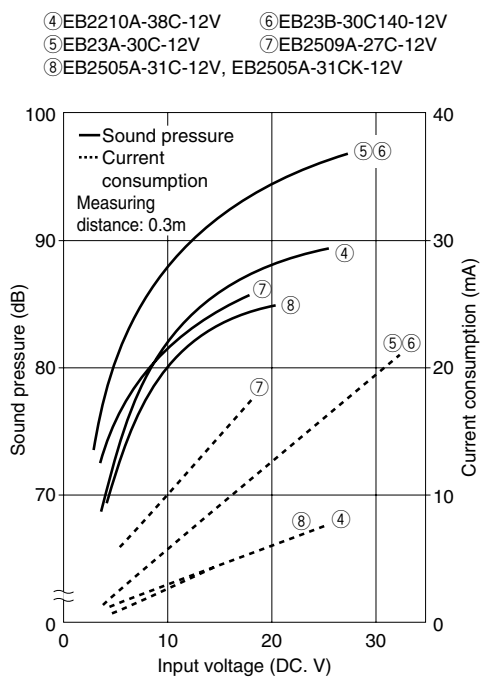
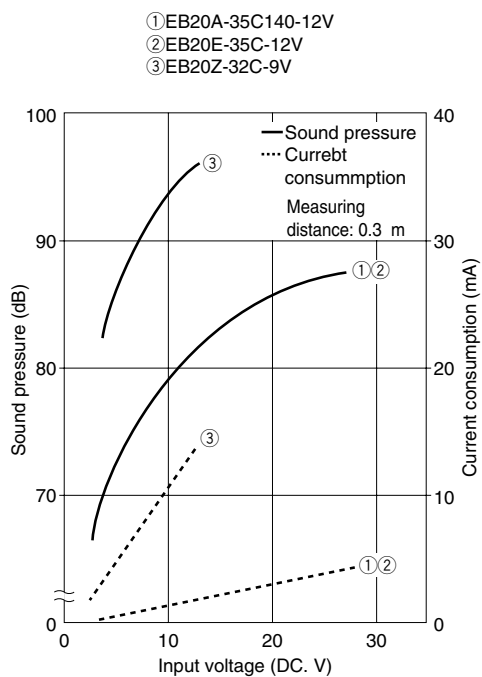
Ⓝ EB3105A-30C-12V

Ⓞ EB4015A or EB4015B or EB4015C


Recommended screw fixing torque
M3 round headed small screw: 3.0kgfcm max.
Lead wire Red(+), Black(-)

Ⓟ EB4015A or EB4015B

Ⓢ EB5838A-27C180-12V


Recommended screw fixing torque
M4 round headed small screw: 3.0kgfcm max.
Lead wire Red(+), Black(-)

●EB-type buzzers: sound pressure vs. input voltage



●EB2505A-31CK-12V washable type

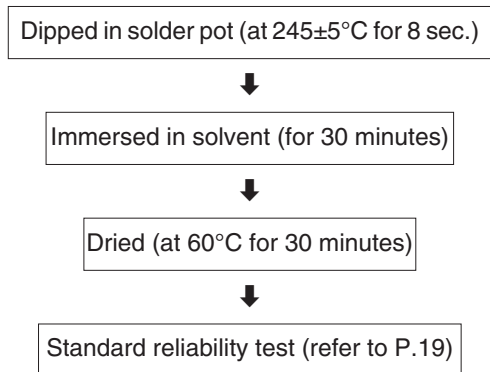
Washing method

Buzzers of this model is wet-washable. For washing by other methods, please consult our engineers.

Resistance to solvents

EB2505A-31CK-12V buzzers have the following solvent-resistance characteristics. If you are planning to use solvents other than those listed below, please consult our engineers.

Solvent-resistance test conditions



Test results

Solvent	Result
Pure water	○
Isopropyl alcohol (IPA)	○
Toluene	○
Isopropyl alcohol + toluene (1:1)	○
Chlorosen	○
Methanol	×
Methylenechloride	×
Trichloroethylene	×

○ : Satisfactory

× : Unsatisfactory

After washing, remove the “anti-liquid seal” before reuse.

Piezoceramic buzzers (U-type)

Information on product naming

[U-type]

<u>U</u>	<u>2</u>	—	<u>5</u>	<u>0</u>	<u>R</u>	<u>D₁</u>	<u>D₂</u>	<u>H</u>	<u>1</u>	<u>2</u>	<u>V</u>
①	②		③			④		⑤		⑥	

- ① Generic symbol for U-type piezoceramic buzzers
 ② Shape number
 ③ Dimensions: Outer diameter of diaphragm (mm)

- ④ Oscillation sounds: R (continuous sounds), D₁ (short intermittent sounds), D₂ (long intermittent sounds)
 ⑤ Symbol indicating the presence of a horn
 ⑥ Rated power supply voltage: Voltage for measuring of sound pressure etc.; for operation securing voltage, refer to operating voltage column.

U-type buzzer rating

(Measurement condition: 25°C±2°C, 45~60% RH)

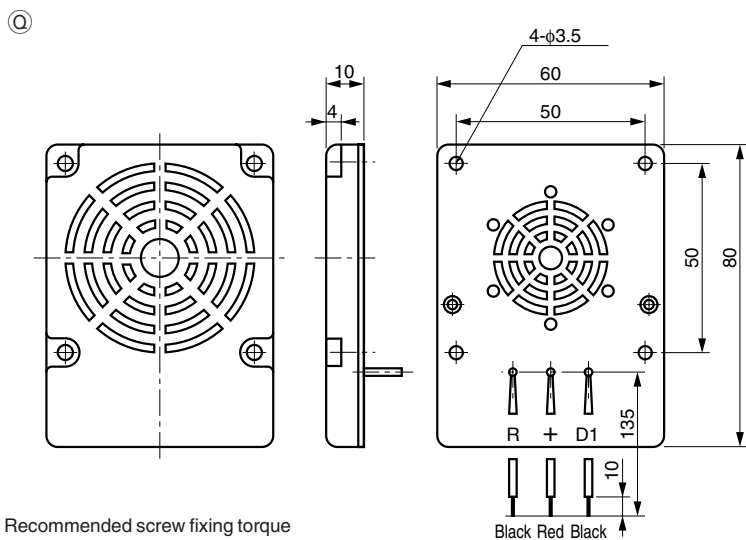
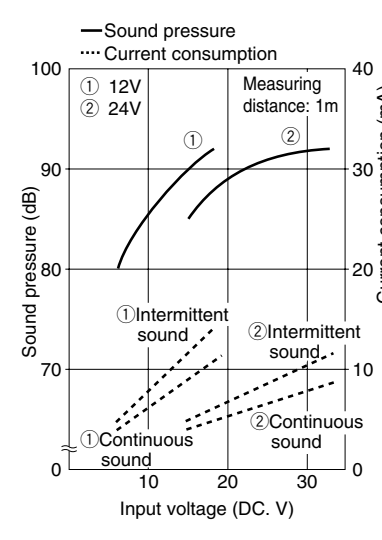
Abbre. name	Parts number	Electrical characteristics							Shapes and structures						Weight (g)
		Oscillation sound	Sound pressure (dB min.) (Distance:m)	Oscillating frequency (kHz)	Current consumption (mA max)	Rated power supply voltage (DC.V)	Operating voltage (DC.V)	Rated working temperature range (°C)	Dimensions (mm)		Shape	Terminal	Casing color		
									Outer diameter	Height					
U1	U1-50RD ₁ 12V	Continuous + short intermittent	70(1.0)	2.7±0.4	12	12	6 to 18	−20 to + 60	80×60	10	Ⓚ	Lead wire	White	39	
	U1-50RD ₂ 24V	Continuous + short intermittent	75(1.0)	2.7±0.4	15	24	15 to 33	−20 to + 60	80×60	10	Ⓚ	Lead wire	White	38	
	U1-50RD ₁ 12V	Continuous + long intermittent	70(1.0)	2.7±0.4	12	12	6 to 18	−20 to + 60	80×60	10	Ⓚ	Lead wire	White	39	
	U1-50RD ₂ 24V	Continuous + long intermittent	75(1.0)	2.7±0.4	15	24	15 to 33	−20 to + 60	80×60	10	Ⓚ	Lead wire	White	39	
U2※	U2-50RD ₁ D ₂ 12V	Continuous + short intermittent + long intermittent	75(1.0)	2.7±0.4	12	12	6 to 18	−20 to + 60	φ60	33	Ⓚ	Soldered terminal	Black	70	
	U2-50RD ₁ D ₂ 24V	Continuous + short intermittent + long intermittent	80(1.0)	2.7±0.4	15	24	15 to 33	−20 to + 60	φ60	33	Ⓚ	Soldered terminal	Black	70	
U2H	U2-50RD ₁ D ₂ H12V	Continuous + short intermittent + long intermittent	80(1.0)	2.7±0.4	12	12	6 to 18	−20 to + 60	φ90	36	Ⓚ	Lead wire	Gray	150	
	U2-50RD ₁ D ₂ H24V	Continuous + short intermittent + long intermittent	85(1.0)	2.7±0.4	15	24	15 to 33	−20 to + 60	φ90	36	Ⓚ	Lead wire	Gray	150	
U4	U4B-21RM-1	Continuous	72(1.0)	2.85±0.4	10	13	5 to 15	−20 to + 70	φ23	18	Ⓚ	Soldered terminal	Black	4	
U8	U8-35R9V	Continuous	80(1.0)	3.3±0.4	20	9	6 to 12	−20 to + 60	φ40	23	Ⓚ	Lead wire	Black	15	
	U8-35R24V	Continuous	80(1.0)	3.3±0.4	10	24	15 to 33	−20 to + 60	φ40	23	Ⓚ	Lead wire	Black	15	

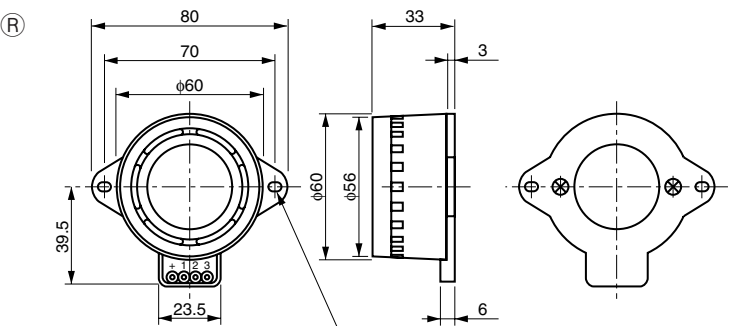
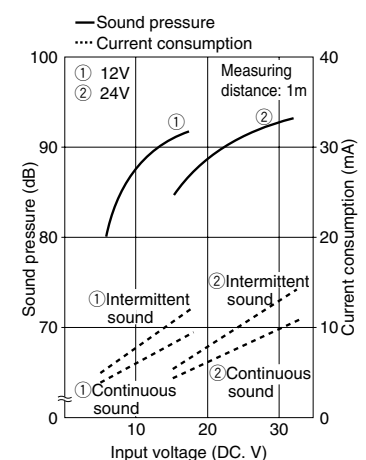
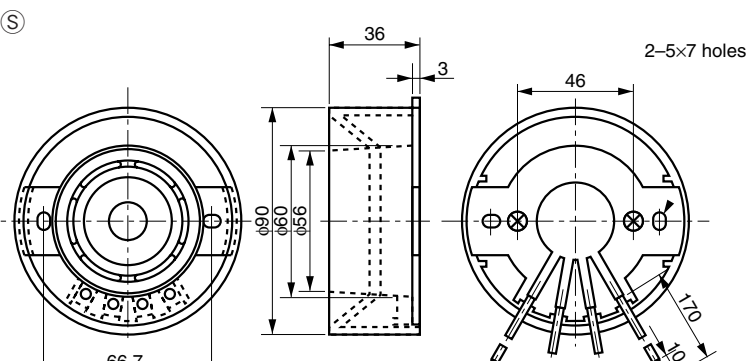
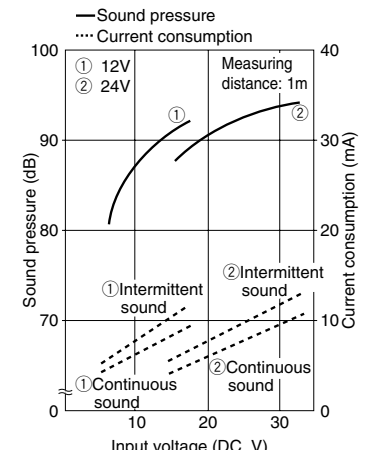
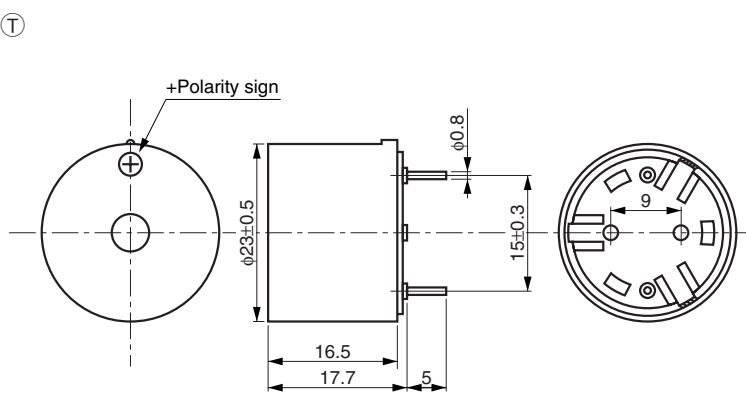
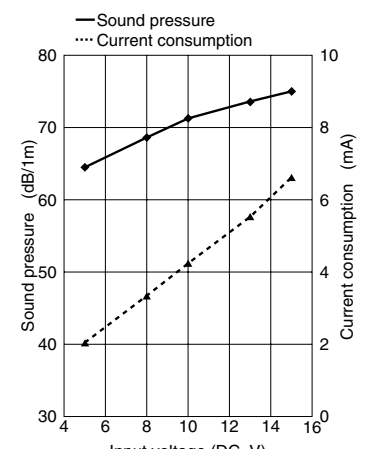
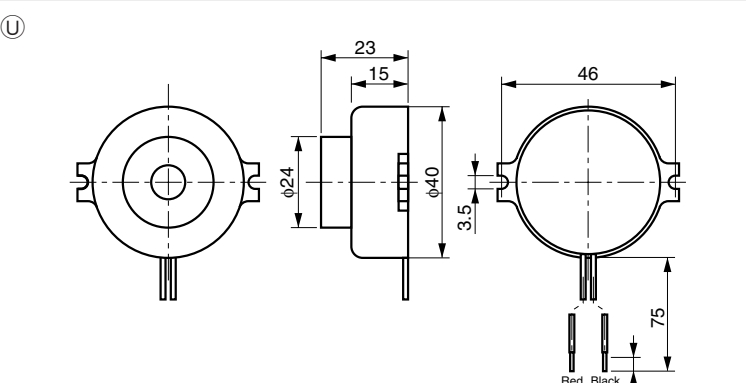
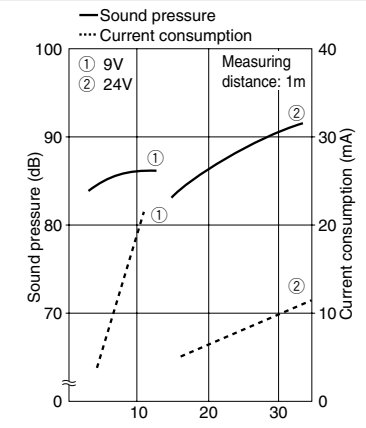
Intermitting period: 10 Hz±30% (short intermittent)

2 Hz±30% (long intermittent)

※Heat resistance of U2 will be up to +85°C

U-type buzzer shapes

Abbr. name	Shape	Unit = mm	Input voltage characteristics
U1	 <p>Recommended screw fixing torque M4 round headed small screw: 3kgfcm max.</p> <p>Black Red Black (-, continuous)(+)(-, intermittent)</p>		 <p>— Sound pressure Current consumption</p> <p>① 12V ② 24V</p> <p>Measuring distance: 1m</p> <p>Sound pressure (dB)</p> <p>Current consumption (mA)</p> <p>Input voltage (DC.V)</p> <p>① Intermittent sound ② Intermittent sound ① Continuous sound ② Continuous sound</p>

Abbrev. name	Shape	Input voltage characteristics
U2	<p>Unit = mm</p>  <p>No.1(-,long intermittent) No.2(-,short intermittent) No.3(-,continuous) Recommended screw fixing torque M3 round headed small screw: 3.0kgfcm max.</p>	
U2H	 <p>Recommended screw fixing torque M5 round headed small screw: 3.0kgfcm max.</p> <p>Black (-,continuous) White (-,short intermittent) Green (-,long intermittent) Red (+)</p>	
U4	 <p>+Polarity sign</p>	
U8	 <p>Recommended screw fixing torque M3 round headed small screw: 3.0kgfcm max.</p> <p>Red Black (+) (-)</p>	

How to use piezoceramic buzzers

Piezoceramic diaphragms have a simple structure consisting of a piezoceramic disc (piezoceramic element) adhered to a thin metal (or plastic) plate. When a voltage is charged in the polarization direction, the piezoceramic element contracts, and expands when voltage is charged in the reverse direction. The quick contraction-expansion motions of the piezoceramic element cause the elastic disk underneath to vibrate and generate sound waves. (See Fig 1)

How the piezoceramic diaphragm generates sound

The piezoceramic diaphragm generates sound by either the external-drive or the self-drive oscillation technique.

Oscillation mode	Oscillating frequency	Features
External-drive Fig. 2 (a)	Operation at any frequency	Easy generation of sound by nonstable multivibrator circuit (see recommended circuit example on page 4).
Self-drive Fig. 2 (b)	Resonance at frequency corresponding to minimum acoustic impedance of diaphragm	Derives loud sound output through positive feedback oscillation circuit (see recommended circuit example on page 6).

How piezoceramic diaphragms are supported

Piezoceramic diaphragms are placed in casings equipped with a resonator, to obtain a required sound output. These diaphragms are supported inside the casings by either the nodal-circular support or peripheral support technique, and should be attached to the support by an elastic adhesive such as a silicone agent.

Supporting method	Features
Nodal-circular support Fig. 3 (a)	<ul style="list-style-type: none"> Allows a virtually free and unrestricted vibration, and thus closely reproduces the acoustic impedance characteristics of the diaphragm. Provides a greater strength against mechanical stress and more stable sound performance. Particularly suitable for a loud sound volume generation.
Peripheral support Fig. 3 (b)	<ul style="list-style-type: none"> Used to lower the resonance frequency of the piezoceramic diaphragm by suppressing the peripheral vibrations. May not have enough strength to resist the mechanical stress at the support area.

Design of the resonator

The piezoceramic diaphragm cannot produce a loud sound volume only by a nodal-circular or peripheral support, and it is necessary to tune the diaphragm to the air acoustic impedance, a job done by the resonator (see Figure 4, cavity v). The resonator is designed according to the equation below.

$$f_{cav} = \frac{c}{2\pi} \sqrt{\frac{\pi a^2}{(16a/3\pi + t)d^2 \pi h}} \quad (\text{Hz})$$

f_{cav} : Resonance frequency of cavity (Hz)
 c : Speed of sound ($331 + 0.6t$) $\times 10^3$ (mm/sec)
 a : Radius of sound hole (mm)
 d : Radius of supporting ring (mm)
 h : Height of cavity (mm)
 t : Thickness of sound hole (mm)

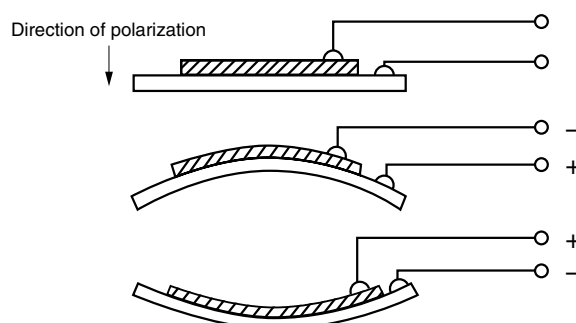


Fig. 1: Distortion of diaphragm

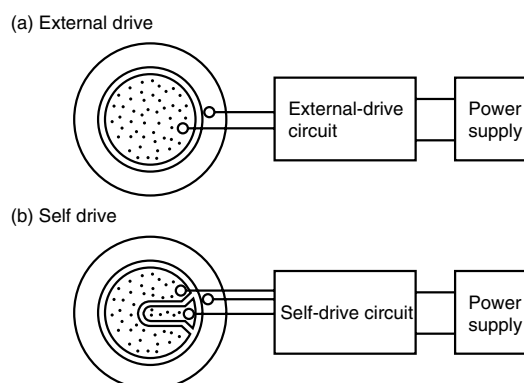
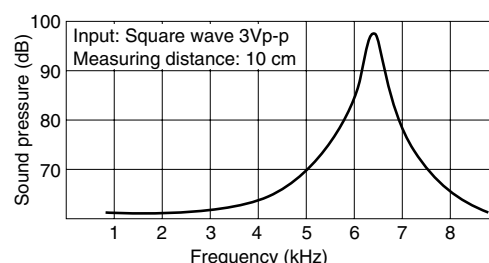
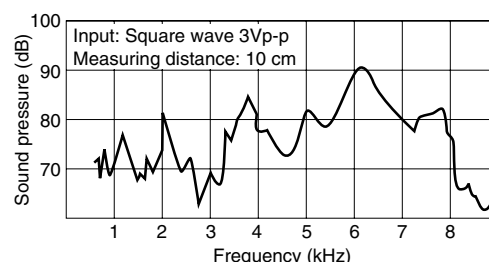


Fig. 2: Method of sound generation



(a) Nodal-circular support



(b) Peripheral support

Fig. 3: Supporting method

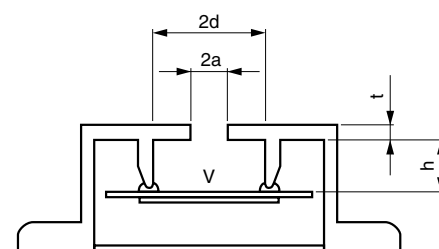
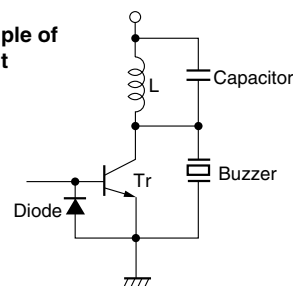


Fig. 4: Resonator for piezoceramic diaphragm

●Booster coil

When the generated sound is less audible due to muffling by the casing, a booster coil is used to amplify the sound (see the righthand figure for an example of a circuit with a booster coil). Given the rise time and breaking time, t sec., of the switching of the transistor by a voltage output from an LSI or other components, a counter voltage is generated in proportion to the coil inductance L and $1/t$. Since this counter voltage has a V_p -p several times greater than the power supply voltage, a proportionally greater sound pressure is obtained. In some cases, a capacitor and a diode are included in the circuit to absorb surge current and thus protect the transistor.

Example of circuit



■ Piezoceramic buzzer measurement method

●Standard measurement conditions

Temperature: $25 \pm 2^\circ\text{C}$ Humidity: 45—60% RH

●Electrical characteristics

1) Resonant frequency and resonant resistance

Measured by an impedance analyzer

2) Capacitance

Measured by a universal bridge or LCR meter (measured between poles at 1 kHz)

●Acoustic characteristics of piezoceramic sounders and buzzers

The oscillating frequency, current consumption and sound pressure are measured by the measuring instruments shown below.

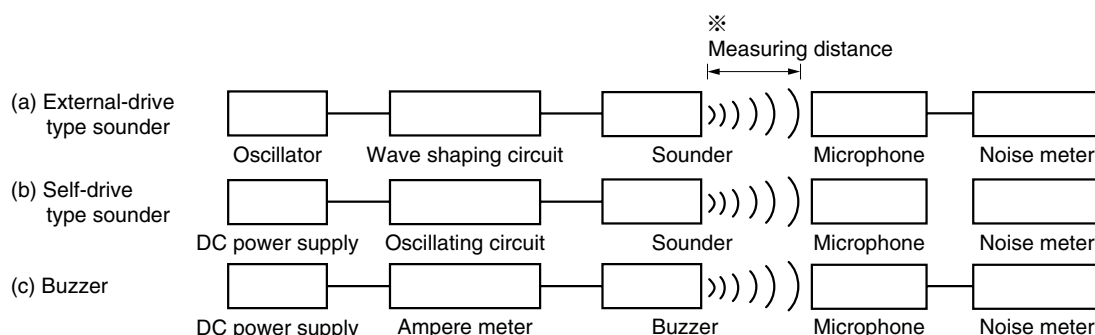


Fig. 1: Measuring formats for acoustic characteristics

In the measuring test, sounders and buzzers are placed as follows:

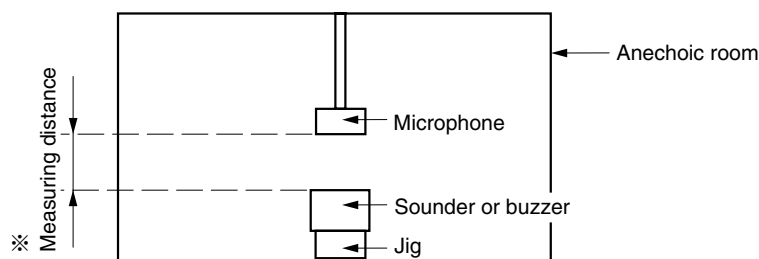


Fig. 2: Sounder and buzzer placement for measurement

※Measuring distance

○Piezoceramic sounder (self vibration and separate vibration types)

After measuring the sound pressure level from 10 cm away, the measured value is converted according to the rated distance of each sounder model.

○Piezoceramic buzzer

After measuring the sound pressure level from 5 cm or 10 cm away, the measured value is converted according to the rated distance of each buzzer model.

●Conversion of sound pressure by distance

The sound pressure values shown in this catalog are not directly comparable because of different measuring distances. Therefore, the following conversion equation should be used for any comparison.

$$B = A + 20 \log (L_a/L_b)$$

A: Sound pressure value at measuring distance of L_a

B: Sound pressure value at measuring distance of L_b

The relationship between an increase in measuring distance and a lowering of sound pressure can be estimated by consulting the table below.

Distance increase	2 times	3 times	4 times	5 times	6 times	7 times	8 times	9 times	10 times
Sound pressure drop (dB)	-6.02	-9.54	-12.04	-13.98	-15.56	-16.90	-18.06	-19.08	-20.00

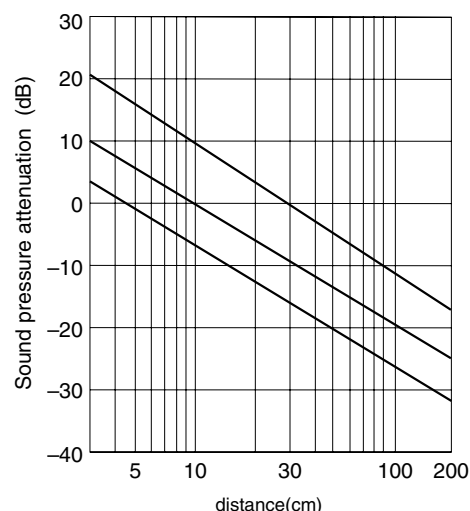


Fig. 3: Distance-sound pressure conversion chart

■ Standard conditions for reliability tests

●High-temperature placement

The product is subjected to its upper limit operation temperature (t_2) for 500 hours.

●Low-temperature placement

The product is subjected to its lower limit operation temperature (t_1) for 500 hours.

●High-temperature and high-humidity placement

The product is placed in a 60°C, 90—95% RH condition for 500 hours, during which the ON-OFF operation is checked every 30 minutes.

●Temperature cycle

One cycle consists of one hour of the t_1 routine and one hour of the t_2 routine, and a total of 24 cycles are imposed.

●Vibration

The product is shaken for two hours in the same direction for a total of six hours in three directions, at a frequency of 10-55-10 Hz, an amplitude of 1.5 mm, and a sweep time of one minute.

●Shock

The product is dropped three times continuously in the same direction under a gravitational force of 100G, for a total of nine drops in three directions.

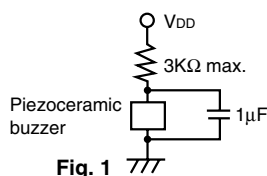
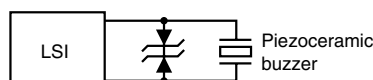
After the completion of each test, the product is left under room temperature for 24 hours, and then undergoes standard tests; the measured values, i.e., the value of oscillating frequency, current consumption, or sound pressure, should not deviate by more than $\pm 10\%$ from the initial measurement values.

⚠ Caution

1. When mounting and handling

- (1) To prevent malfunctions, install the piezoceramic buzzer or sounder so that it does not come into contact with other components on its side or top surface.
- (2) Do not block the sound opening of the buzzer or sounder. Maintain a distance of at least 10mm between the sound opening and any surrounding object. Also, do not cover the sound opening with an adhesive tape or the like. If the sound hole is blocked, the buzzer or sounder may exhibit abnormal oscillation or stop functioning.
- (3) The sound pressure of the buzzer or sounder may be measured after, but not before, it is installed in the host equipment. When determining the installation position, make sure that adverse acoustic impedance does not exist in the installation area. If acoustic impedance exists, the buzzer or sounder may exhibit abnormal oscillation or stop functioning.
- (4) When securing the buzzer or sounder with screws, tighten the screws within the specified torque range. Use pan-headed screws and washers so the buzzer or sounder casing will not be deformed. A deformed casing may cause the buzzer or the sounder to exhibit abnormal oscillation or stop functioning.
- (5) When stripping a lead wire, do not cut the conductive line inside the coating, thereby ensuring the sound will be properly generated. Use a stripper suitable for the diameter of the lead wire.
- (6) Do not apply strong force to the pins before they are soldered. If the pins are bent or cut due to excessive force, the buzzer or sounder may not generate sound.
- (7) Do not use the wrong polarity. If the buzzer or sounder is improperly connected, the internal circuit may break down when electricity is applied.
- (8) Use the buzzer or sounder within the operation voltage range. A higher voltage may damage the diaphragm and other components or cause a fire. With a lower voltage, the sound may not be produced.
- (9) Do not apply a DC current to the piezoceramic sounder. Otherwise, silver migration may occur, which will lower the insulation resistance and cause the sounder to stop functioning.

- (10) Use a low-impedance (not more than 100 Ω) power supply for the buzzer; otherwise, the buzzer may exhibit abnormal oscillation or stop functioning.
- (11) Do not interpose a resistance in series between the buzzer and the power supply, else the buzzer may exhibit abnormal oscillation or stop functioning. If the interposition of a resistance is necessary to adjust the sound volume, insert a capacitor of approximately 1 μF in parallel, not in series, as shown in Figure 1.
- (12) Do not use the buzzer or sounder in a corrosive ambience, such as an ambience containing sulfur hydrides. Otherwise, a normal sound may not be generated due to corrosion of the components and diaphragm.
- (13) When washing, be sure that a solvent or the vapor of a solvent does not infiltrate the buzzer or the sounder, thereby preventing deterioration and damage by the solvent trapped inside the casing.
- (14) Do not drop the buzzer or sounder. When subjected to a mechanical shock, the sounder may accumulate a high voltage inside its piezoelectric elements, resulting in an electric shock to anyone who touches it. Also if such a sounder is connected to a circuit, it may damage transistors and/or other electronic components.
Sounders which may have accidentally been subjected to a mechanical shock can be made safe by shorting them between the poles. Then check the sound pressure, tone and appearance before use.
- (15) Take special protective measures to prevent deterioration and breakdowns, whenever the buzzers or sounders are stored in the following unfriendly areas:
- | | |
|-----------------------------|--|
| ① Dusty places | ④ Moist places |
| ② Hot or frosty places | ⑤ Humid places |
| ③ Areas exposed to sunlight | ⑥ Areas exposed to solvents or their vapor |
- (16) When operating the buzzer or sounder outdoors, protect it from moisture to ensure normal operation.
- (17) When soldering on diaphragms, use a solder containing 2% silver and finish each soldering job within 1 second at a soldering temperature of $300 \pm 10^\circ\text{C}$. If the solder does not contain silver, diaphragm performance may be adversely affected.
When soldering buzzers and sounders having lead pins, complete each soldering job manually within 3 seconds at a soldering temperature of $300 - 320^\circ\text{C}$. Moreover, in the case of the EE1707K, EE2108K, EB2505A and EB3105A models, manually complete each soldering job within 5 seconds at $260 \pm 5^\circ\text{C}$.
- (18) To protect an LSI from a counter voltage of the sounder, which may be caused by an external mechanical shock, connect a Zener diode or varistor in parallel to the LSI, as shown in Figure 2.


Fig. 1

Fig. 2

2. When storing

To prevent deterioration and/or breakdowns, do not store buzzers and sounders in the following places:

- | | |
|---|--|
| ① Dusty places | ⑤ Humid places |
| ② Hot or frosty places | ⑥ Areas exposed to solvents or their vapor |
| ③ Areas exposed to sunlight | ⑦ Areas exposed to corrosive gases, such as H_2S |
| ④ Places with leaking or infiltrating water | |

3. Other precautions

- ① To maintain the initial performance and safety standard of the buzzer or sounder, do not disassemble, repair or modify it.
- ② The products contain the lead so that the disposal of industrial wastes has to be required.



FDK CORPORATION

Electronics sales div.

5-36-11, Shinbashi, Minato-ku, Tokyo 105-8677, Japan (Hamagomu Bldg.)
TEL: (81)-3-5473-4662 FAX: (81)-3-3431-9436

U.S.A. FDK AMERICA, INC. CORPORATE OFFICE

2270 North First Street, San Jose, California 95131-2022, U.S.A.
TEL: (1)-408-432-8331 FAX: (1)-408-435-7478

FDK AMERICA, INC. BOSTON OFFICE

411 Waverley Oaks Road, Suite 324, Waltham,
Massachusetts 02452-8437, U.S.A.
TEL: (1)-781-899-7700 FAX: (1)-781-899-7701

FDK AMERICA, INC. SAN DIEGO OFFICE

6540 Luck Blvd Suite C274 San Diego,
California 92121-2766, U.S.A.
TEL: (1)-858-558-8368 FAX: (1)-858-558-6005

Europe FDK ELECTRONICS GMBH

Hansaallee 177C, 40549 Düsseldorf, Germany
TEL: (49)-211-591574 FAX: (49)-211-593549

FDK ELECTRONICS UK LIMITED

Suite 4C Celect House 12A Fairbairn Road, Kirkton North Livingston EH54 6TS,
Scotland, United Kingdom
TEL: (44)-1506-467981 FAX: (44)-1506-467982

Asia FDK HONG KONG LTD.

Unit 18. 15/F., Chevalier Commercial Centre, 8 Wang Hoi Road,
Kowloon Bay, Hong Kong
TEL: (852)-27999773 FAX: (852)-27554635

FDK SINGAPORE PTE., LTD.

4, Leng Kee Road, #06-07/08 SiS Building, Singapore. 159088,
Republic of Singapore
TEL: (65)-472-2328 FAX: (65)-472-5761