

# Static RAM Applications



Figure 1 illustrates the ease of designing a static RAM support memory for a microprocessor, in this case the 16-bit INS8900. Full buffering has been included to a system bus which carries common input/output data and address. Operation may be from a 5-volt power supply or on-board regulation may be used. Decoupling should follow the same practices as used for TTL boards.

Figures 2 and 3 depict possible configurations for power down of the MM5257, while figure 4 shows allowable input conditions. These power down techniques apply to others of National's static RAM family including the MM2114, MM2101A, MM2102A, MM2111A, and MM2112A series.

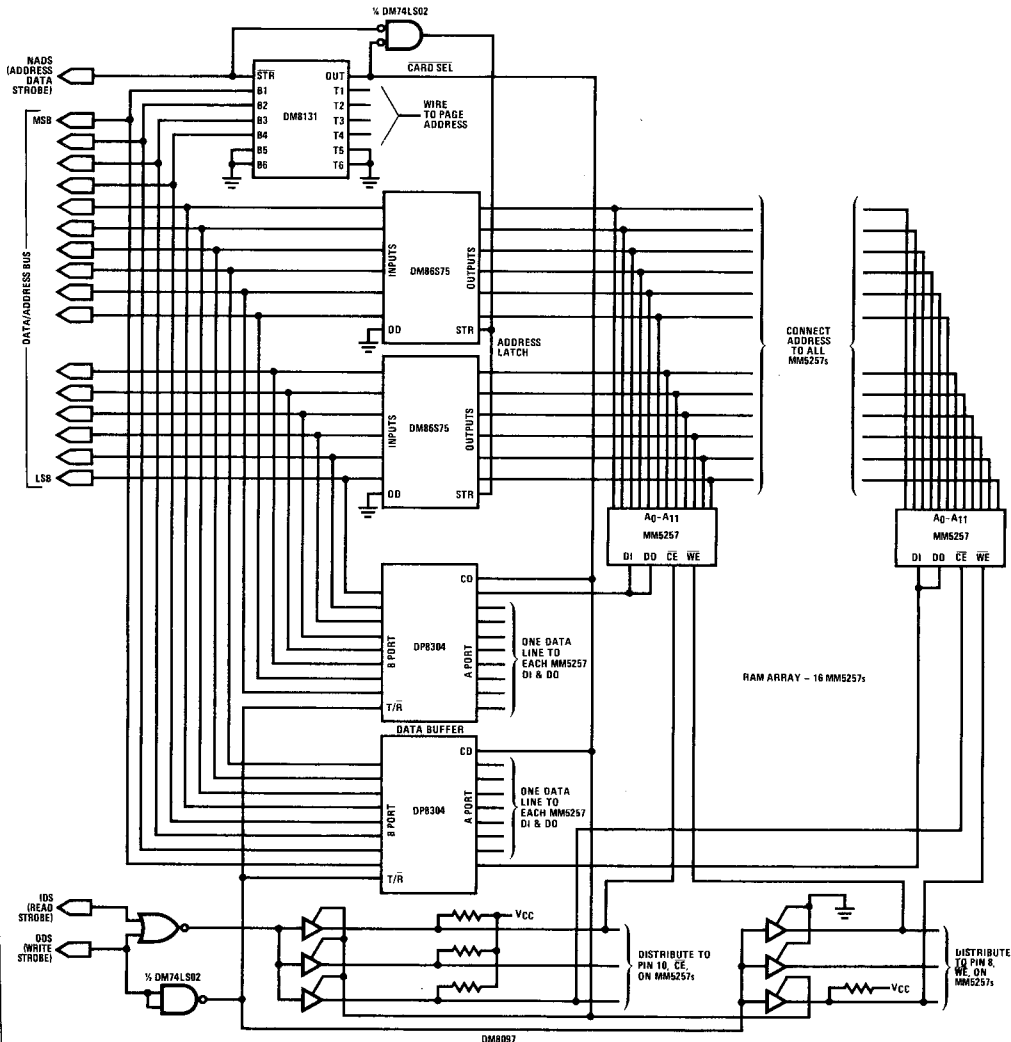


Figure 1. Example Application of MM5257 4k x 1 Static RAM: 4k x 16 Memory Card for 16-Bit Microprocessor System

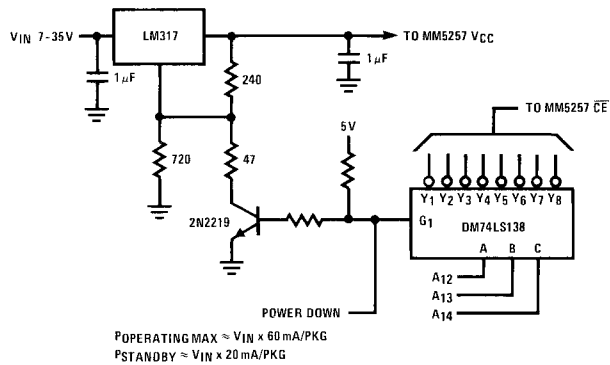


Figure 2. 4k Static Power Down 1

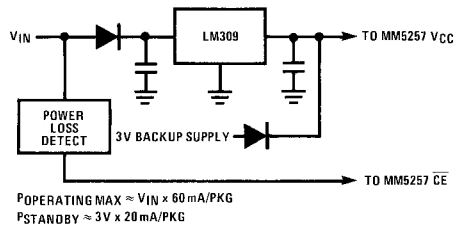


Figure 3. 4k Static Power Down 2

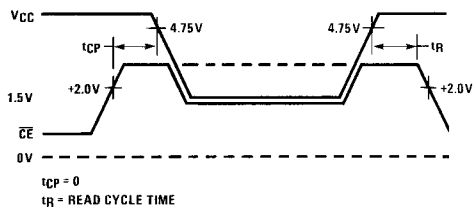


Figure 4. 4k Static Power Down Mode