

TP

TICKET RECEIPT DISPENSER

SERIES 1000 - 2000

Matrix impact printing

Printing speed up to 80 cps

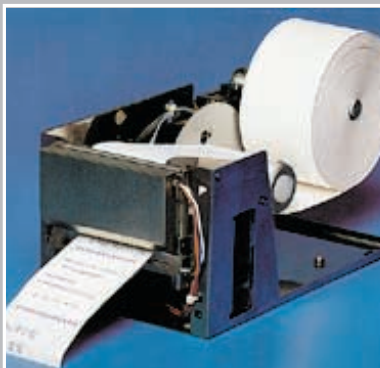
Up to 3 built-in fonts

12 Vdc +/-10% Power Supply

Buffer up to 4 Kbytes

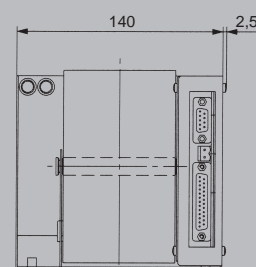
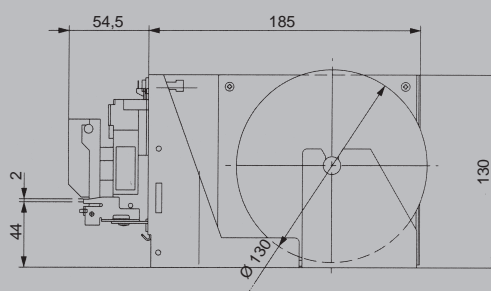
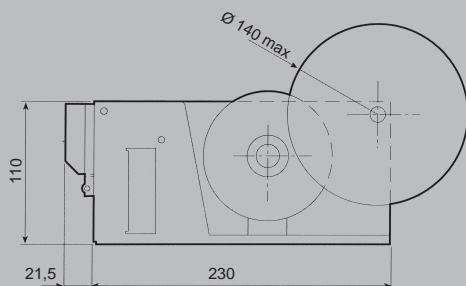
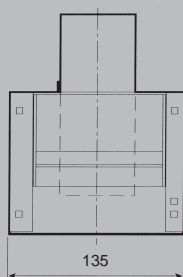
Serial and parallel Interface

One and two-colour impact cash-slip dispensers with 57 to 76 mm paper. The RS 232 serial and parallel centronics interfaces are available. Up to two-copy printing and high autonomy of printing. The paper loading and ink cartridge replacing operations are made easier.



TP 1000

TP 2000



TECHNICAL SPECIFICATIONS

Options and Accessories

Power supply
Two types of power supply are available: PSM 12 (switching) and 90-240 Vac.

Real time clock
The Calendar clock (RTCK) mounted on the piloting board and powered by a rechargeable lithium battery is available on request.

Bar-code
As an option, the TP 2000 dispenser allows the most popular barcodes to be printed. The formats managed by the printer are the following:
UPC-A
EAN 13
EAN 8
CODE 39
INTERLEAVED 2-5
CODABAR

Model	TP 1000 24 AV	TP 1000 40 AV
Columns	24	40
Character (LxH mm)	1.7x2.6	1.1x2.6
Character matrix	6x10	
Graphic dot	0.33x0.38	0.19x0.38
Dots per line	144	240
Line Feed/second	6	3.6
Lines/second	2.5	1.5
Characters/second	60	60
Printing method	Impact dot matrix	
Writing method	Straight or reverse	
Print formats	Normal, double height and width, enlarged	
Character set	ASCII extended	
Paper width	57.5 mm ± 0.5 mm (Ø 140 mm max 1 original, 1 chemical paper copy)	
Buffer	150 Byte	
EEPROM	256 Byte, 2 KByte (optional)	
Interfaces	RS 232, centronics (optional)	
Real time clock	Available (optional)	
Power supply	12 Vdc ± 10%	
Electrical input	Stand-by=38 mA; Average=880 mA; Peak=3.45 A (600 µsec.)	
MTBF	1,500,000 lines	

Model	TP 2000	
Columns	35	42
Character (LxH mm)	1.6x2.9	1.3x2.9
Character matrix	6x10	8x10
Graphic dot	0.315x0.423	0.158x0.423
Dots per line	210	420
Line Feed/second	7.4 (13.2 Vdc)	
Lines/second	2.3 (13.2 Vdc)	2.3 (13.2 Vdc)
Characters/second	58	73
Printing method	Impact dot matrix	
Writing method	Straight, reverse, red/black	
Print formats	Normal, double height and width, enlarged	
Character set	ASCII extended	
Paper width	76 mm ± 0.5 mm (Ø 130 mm max)	
Buffer	4 KByte	
Interfaces	RS 232 e centronics	
Real time clock	Available (optional)	
Power supply	12 Vdc ± 10%	
Electrical input	4 A max	
MTBF	1,500,000 lines	

