

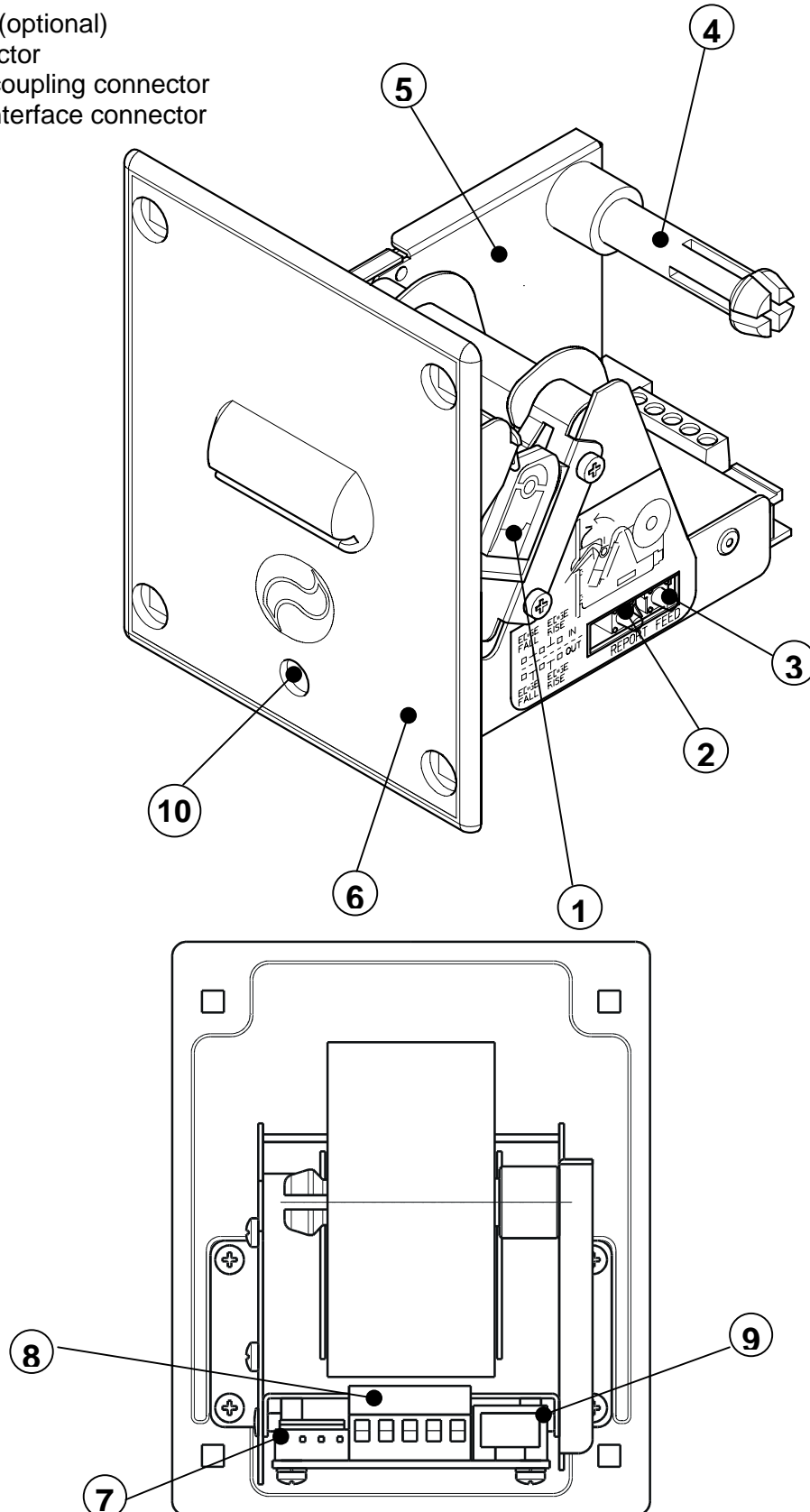
Ticket Gaming

TG 35-58



Parts of the printer

- 1 - Print mechanism
- 2 - "Report" key
- 3 - "Feed" key
- 4 - Paper roll support
- 5 - Case
- 6 - Front panel (optional)
- 7 - Feed connector
- 8 - Token unit coupling connector
- 9 - TTL serial interface connector
- 10 - Led



All rights reserved. The reproduction of this manual, either totally or partially, in any form whatsoever, whether it be on paper or through computer processes, is strictly prohibited. Custom Engineering s.r.l. and the resource teams employed in the making of this manual will not be held responsible for any problems arising as a result of improper use of this manual, as they guarantee that the information contained in it has been subjected to careful inspection. Any suggestions regarding errors in its contents or possible improvements will be greatly appreciated. The products are continuously checked and improved. For this reason Custom Engineering s.r.l. reserves the right to modify the information contained in this manual without prior notice.

COD. DOME – TG35-58

REV. 1.20

Copyright © 1999 Custom Engineering s.r.l. – Italy

Custom Engineering

Str. Berettine 2 - 43010 Fontevivo (PARMA) - Italy

Tel. : +39 0521-680111 - Fax : +39 0521-610701

http: www.custom.it Email : support@custom.it

Declaration of Conformity “CE”

N°: DC0390999

According to ISO/IEC Guide 22 and EN 45014

Manufacture's Name: Custom Engineering s.r.l.

Manufacture's Address: Strada Berettine 2
Fontevivo (Parma)
Italy

Declare the product:

Product name: Ticket gaming

Product type: TG

Model: TG35, TG58

Conform to the following directives:

Electromagnetic Compatibility Directive 89/336/EEC; 92/31/EEC; 93/68/EEC

In accordance with following standards:

EN 55022 Class B	Limits and methods of measurement of radio disturbance characteristics of information technology equipment	1994
EN 50082-1	Electromagnetic Compatibility – Generic Immunity Standard. Part 1: Residential Commercial and Light Industry.	1992
EN 61000-4-2	Electrostatic discharge requirements 4KV contact discharge, 8KV air discharge	1995
EN 61000-4-4	Electrical fast transient/burst requirements Signal line 0.5KV, AC mains 1KV	1995
ENV 50140	Radiated radio-frequency electromagnetic field – Immunity test 3V/m, 80MHz-1000MHz, 80% 1KHz AM	1993

July 1999

INTRODUCTION

GENERAL FEATURES
DESCRIPTION OF THE PRINTER

1. INSTALLATION AND USE

1.1 CONNECTIONS

1.1.1 Power Supply and Input/Output

1.2 CONFIGURATION BY REPORT AND FEED KEYS

1.3 AUTOTEST

1.4 CAUTIONS

1.5 TICKET CHARACTERISTIC

2. TECHNICAL SPECIFICATIONS

2.1 TECHNICAL SPECIFICATIONS

2.2 DIMENSIONS

APPENDIX A – ACCESSORIES AND SPARE PARTS

A.1 ACCESSORIES

A.1.1 Power Supply

A.2 SPARE PARTS

GENERAL FEATURES

The TG35-58 printer is the ideal solution for :

- Gaming machines
- Vending machines
- Self-service machines
-

It does not require pre-printed and pre-numbered Tickets. The printer automatically prints the heading on the receipt, which can be completely customized, with date, time of day and progressive number.

The TG35-58 printer resolves the following problems :

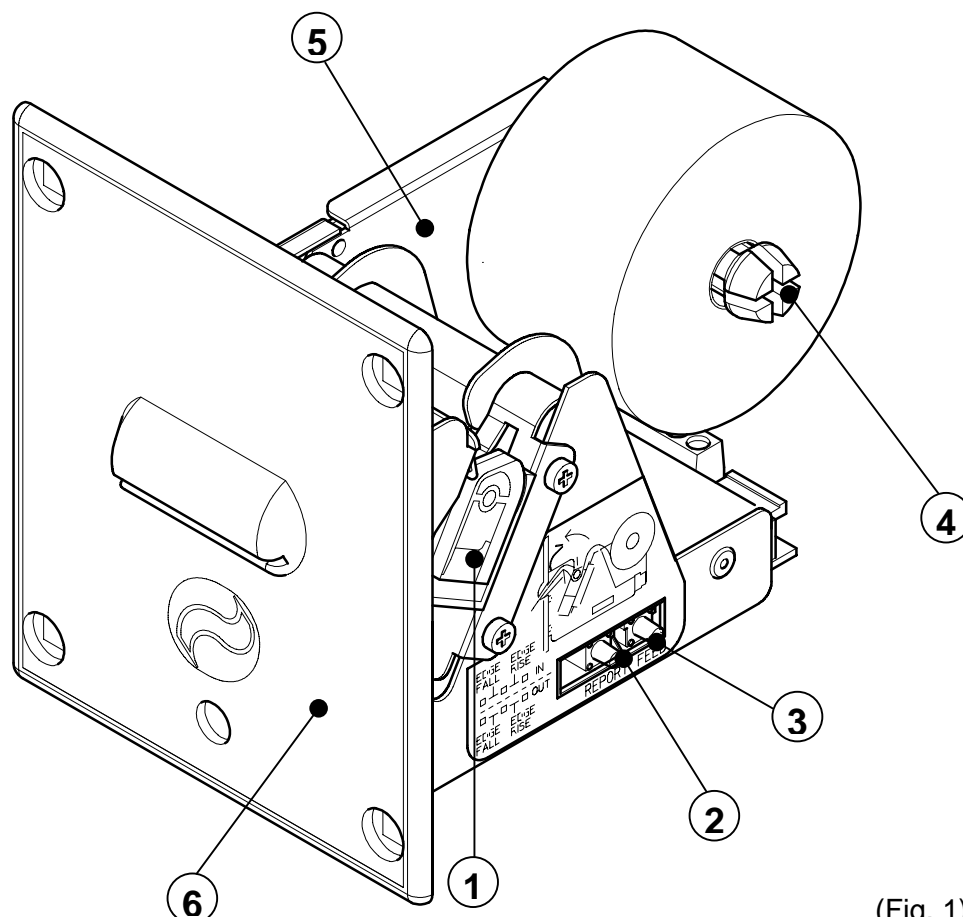
- Safety : the print-out cannot be tampered with and is not transferable.
- Ease of installation : Same dimensions, fastenings and connections as the Ticket Outlet.
- Accounts management : banknote readers and token units can be hooked up to the printer so that gaming data may be stored and printed on request.

INTRODUCTION

DESCRIPTION OF THE PRINTER

It is equipped with a 200 dpi thermal print mechanism that uses paper rolls with a width of 35 mm (58mm optional); it has a TTL serial interface and is also equipped with a calendar clock (Real Time Clock).

The TG35-58 printer consists of a case (5) onto which the following components are fitted: thermal print mechanism (1), paper roll pin (4) front panel (6) in PPO for installation on Gaming Machines.



(Fig. 1)

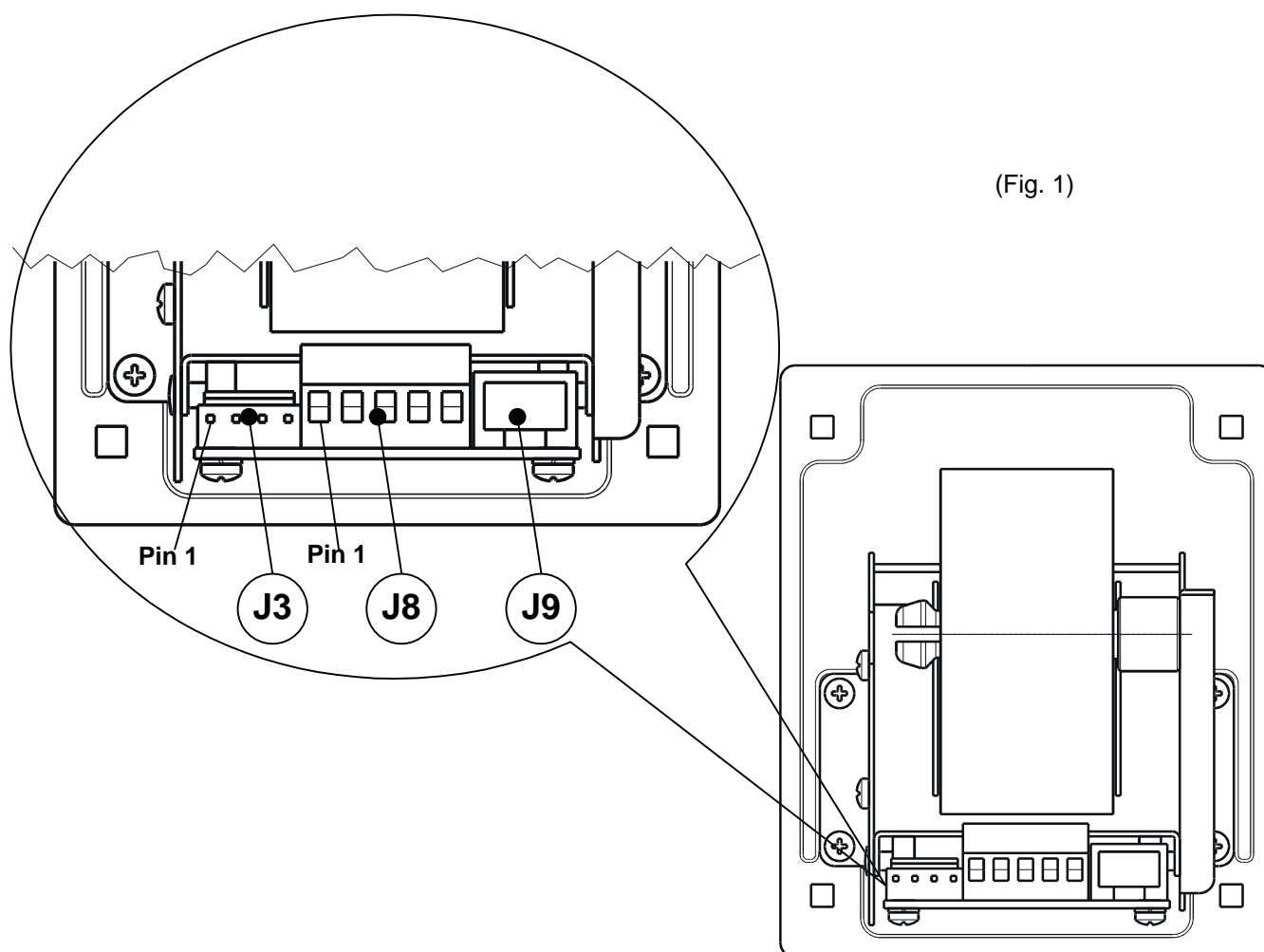
- When the “REPORT” key (2) is pressed, it prints the operational report, that lists the total number of tickets dispensed, the impulses totalized by the token unit linked up to input A and the impulses totalized by the token unit linked up to input B, as well as the date on which the totals were zero-set. After the report has been printed, the totals can be zero-set by pressing the “REPORT” and “FEED” keys simultaneously. If, on the other hand, you wish to exit from the procedure, press one of the keys only.
- When the “FEED” key (3) is pressed, the paper can be fed forward manually.
- The yellow Status LED displays a printer hardware error status and the winnings. The check is carried out “on line”, i.e. in the event of a malfunctioning, the LED will starts flashing as follows:

Status of LED	Description
Always OFF	Printer OFF
Always ON	Printer OFF – no faults
Slow flashing (on for a long period)	Paper Out Message
Slow flashing (on for a short period)	Tilting cover raised
Fast flashing	The winnings

1. INSTALLATION AND USE

1.1 CONNECTIONS

1.1.1 Power Supply and Input/Output



As regards the power supply, the printer TG35-58/40 is equipped with a Ticket Outlet-compatible 4-pin male connector (J3). The signals on the pins of the feed connector are as follows:



WARNING

Respect the polarity of the power supply:

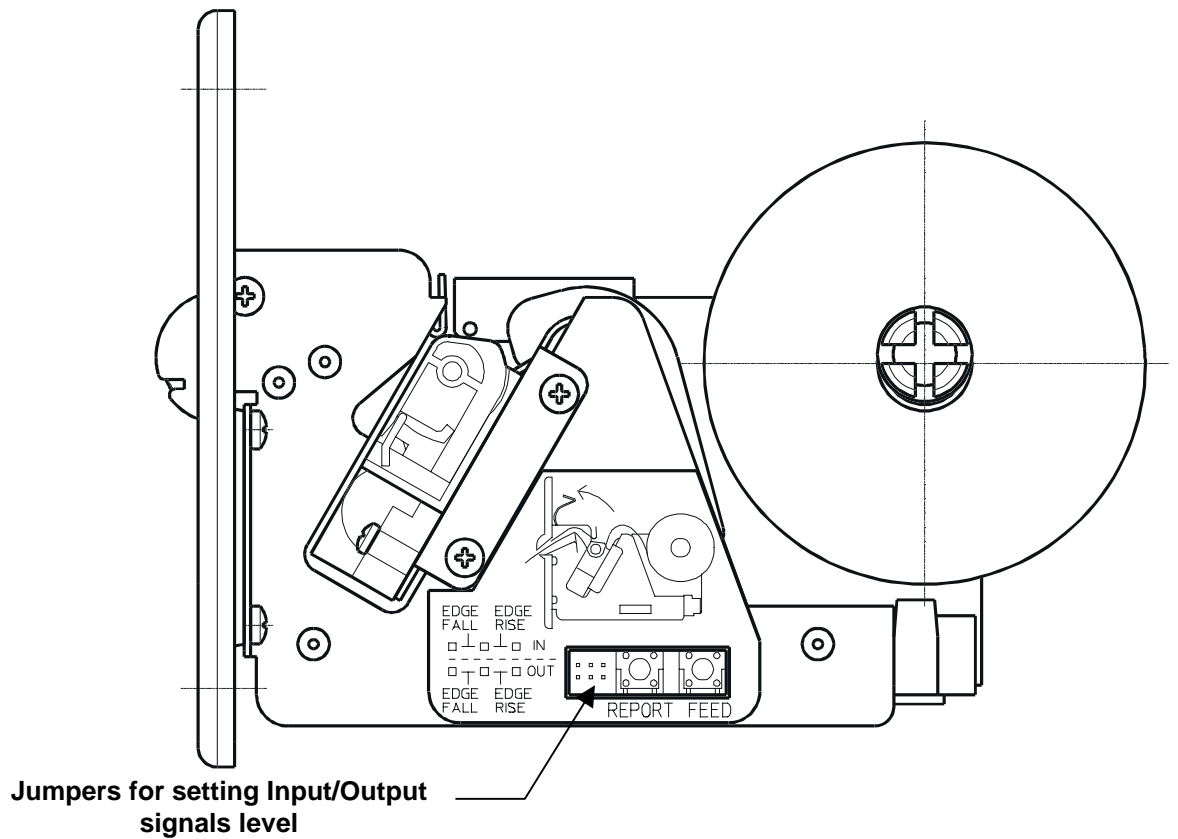
PIN	SIGNAL	< IN / OUT >	Description
1	CONFIRMATION IMPULSE	OUT (O.C.)	Open Collector
2	12V	POWER	Power supply
3	GND	POWER	Power supply
4	TICKET PRINTING INFEEED	IN (O.C.)	Open Collector

The TG35-58/40 printer is equipped with a 5-pin screw terminal connector (J8) for hooking up to the token unit. The signals on the connector pins are as follows:

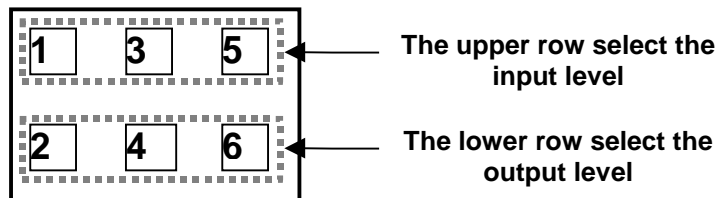
PIN	SIGNAL	< IN / OUT >	Description
1	12V	POWER	Power supply
2	GROUND	POWER	Power supply
3	INPUT A FOR TOKEN COUNTING	IN (O.C.)	Open Collector
4	INPUT B FOR TOKEN COUNTING	IN (O.C.)	Open Collector
5	AUXILIARY OUTPUT	OUT (O.C.)	Open Collector

1. INSTALLATION AND USE

The printer TG35-58 is equipped with a jumpers row (JP5) for setting Input/Output signals level.



Pin-Out of JP5 jumpers row.



Jumpers setting is as follows :

JP5 Setting		
Input	1-3 : Low level	3-5 : High level
Output	2-4 : Low level	4-6 : High level

1. INSTALLATION AND USE

1.2 Configuration of REPORT and FEED keys

If, when the printer is switched on, both of the above-mentioned keys are held down, the printer enters configuration mode and prints the first modifiable parameter. At this point, each time the REPORT key is pressed, the parameter changes and its current value is printed. Once the desired value has been obtained, press the FEED key to proceed to the next parameter, and so on. Once all the parameters have been run through, the printing of a message signals the end of setting procedure.

1.3 AUTOTEST

To run the autotest, press the **FEED** key while switching on the printer. During the running of the autotest, the character fonts and logos stored inside the printer are printed.

1.4 CAUTIONS



WARNINGS:

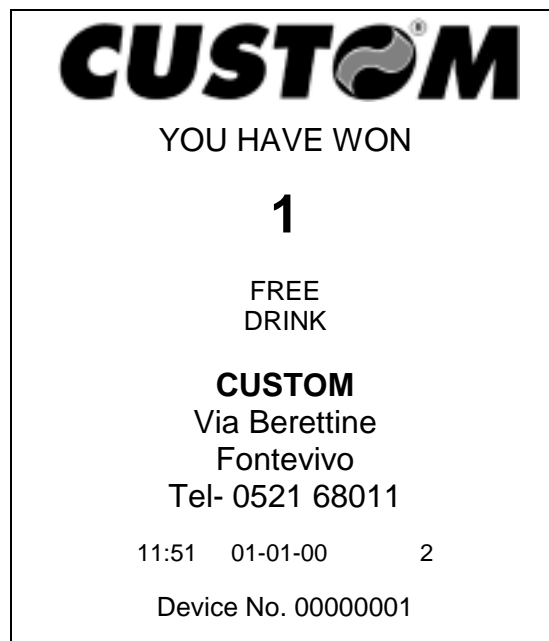
- Do not print without paper.
- Do not drag the carriage manually when the printer is on.
- Do not allow any foreign bodies to become trapped inside the printer.
- Safeguard all parts of the printer from blows, both during and subsequent to installation.

1. INSTALLATION AND USE

1.5 TICKET CHARACTERISTIC

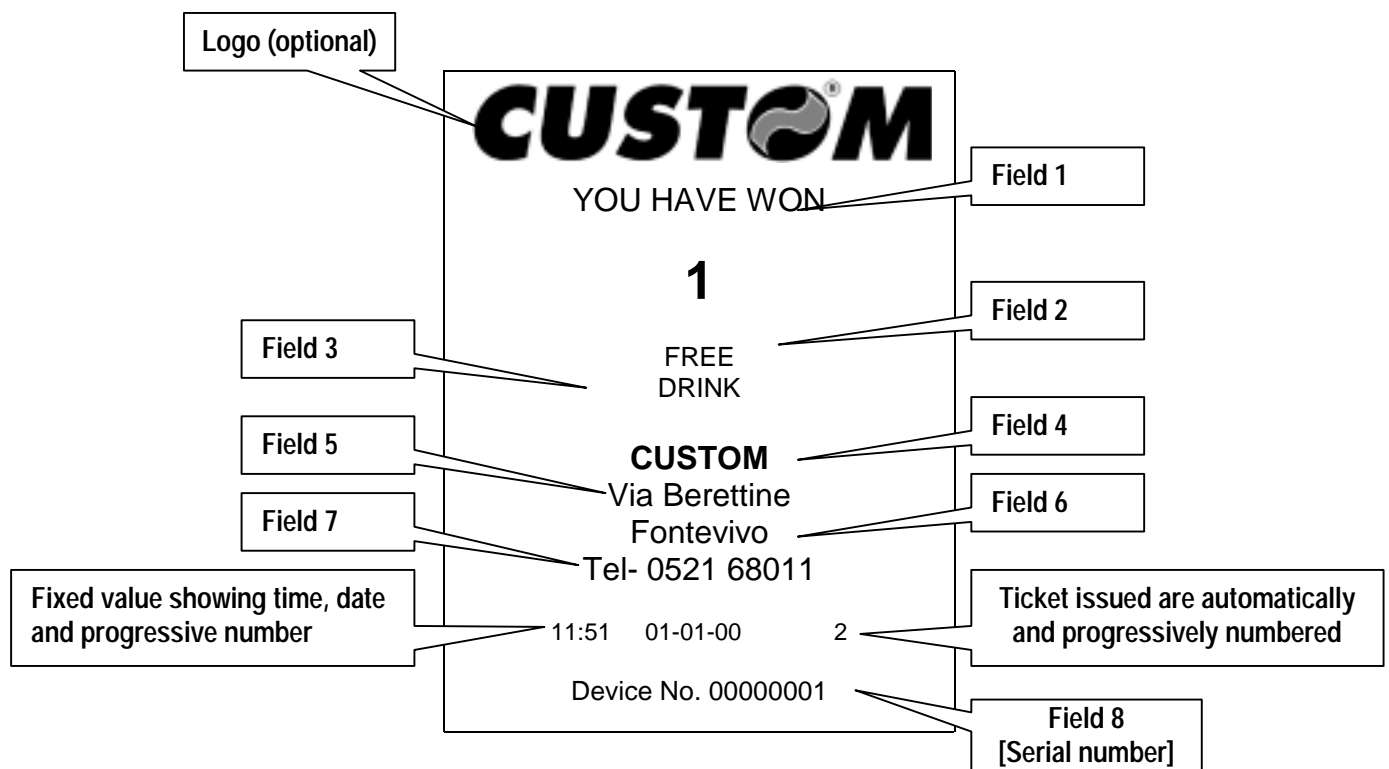
The ticket has the following features :

- 10 fields in which the data personal to the company can be entered;
- the automatic printing of a progressive number indicating the number of tickets issued.



Example of ticket

In wich the fields are sets as follows :



2. TECHNICAL SPECIFICATIONS

2.1 TECHNICAL SPECIFICATIONS

The TG35-58 printer is equipped with :

- a Ticket Outlet-compatible connector
- an input signal connector from token unit and banknote reader
- a serial communication port for downloading data from the PC and customizing the ticket
- a front panel in PPO.

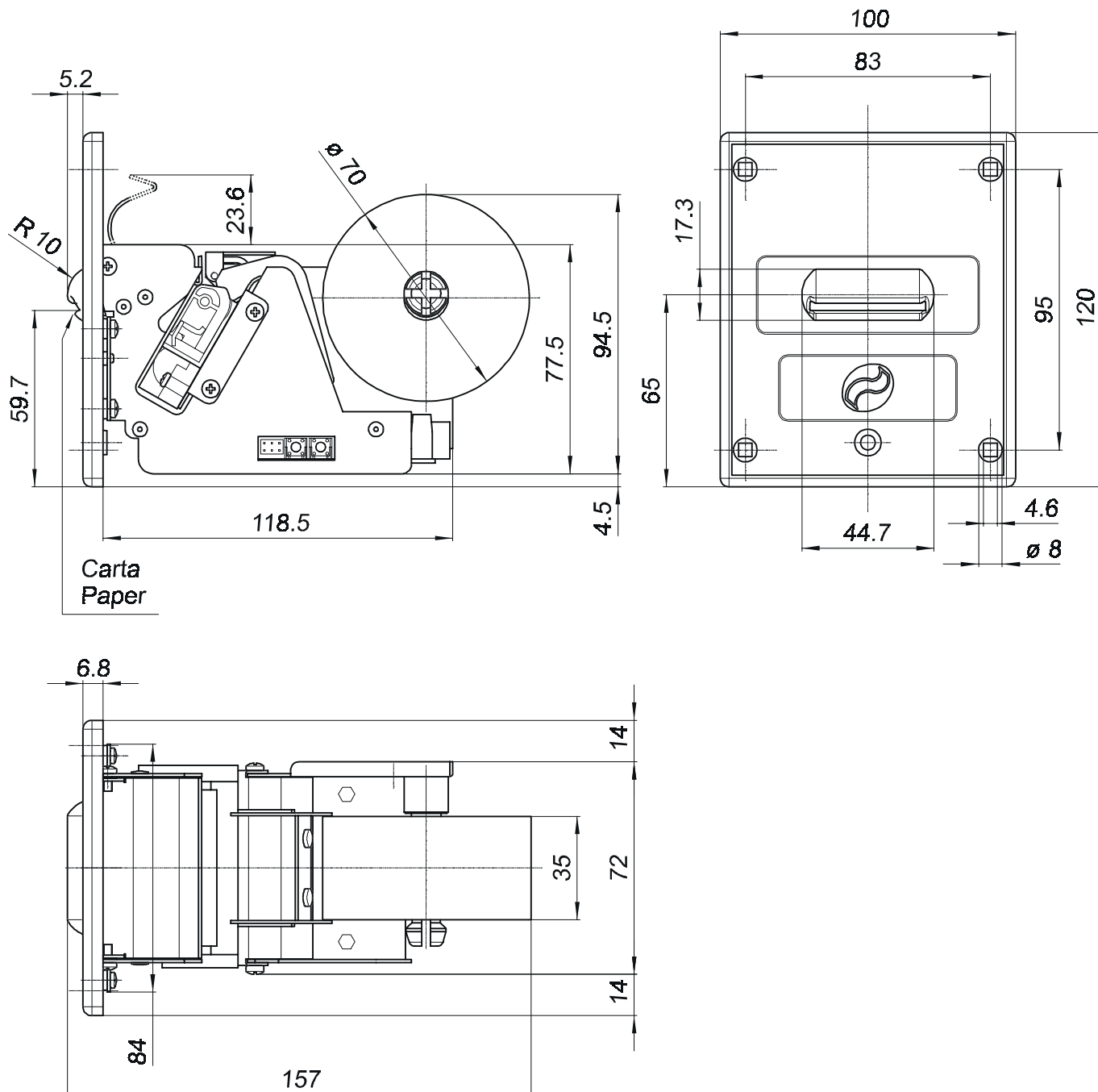
Table 2.1 lists the main technical features of the printer.

Model	TG35	TG58
Resolution	200 DPI (8 dot/mm)	
Printing speed	42 mm/sec.	
Paper feed speed	60 mm/sec.	
Paper roll dimensions	35mm	58mm
Autonomy	18571 hours at 3.5 μ A	
Standard interfaces	TTL serial	
Optional interfaces	RS232 serial	
Power supply	12 Volts	
Absorption		
Current when printing	1.5A	
Current when on stand by	50mA (when the printer is switched-on)	
Environmental conditions		
Operating temperature	0°C - 50°C	
Operating humidity count	20% - 85%	
Storage temperature /Humidity	-25°C + 70°C / 10% - 80%	
Options	<ul style="list-style-type: none">• Starter kit, that is a printer programming, customized message and heading kit including PC connecting cable.	

2. TECHNICAL SPECIFICATIONS

2.2 DIMENSIONS

The dimensions of the TG35-58 printer are shown in the figure below.

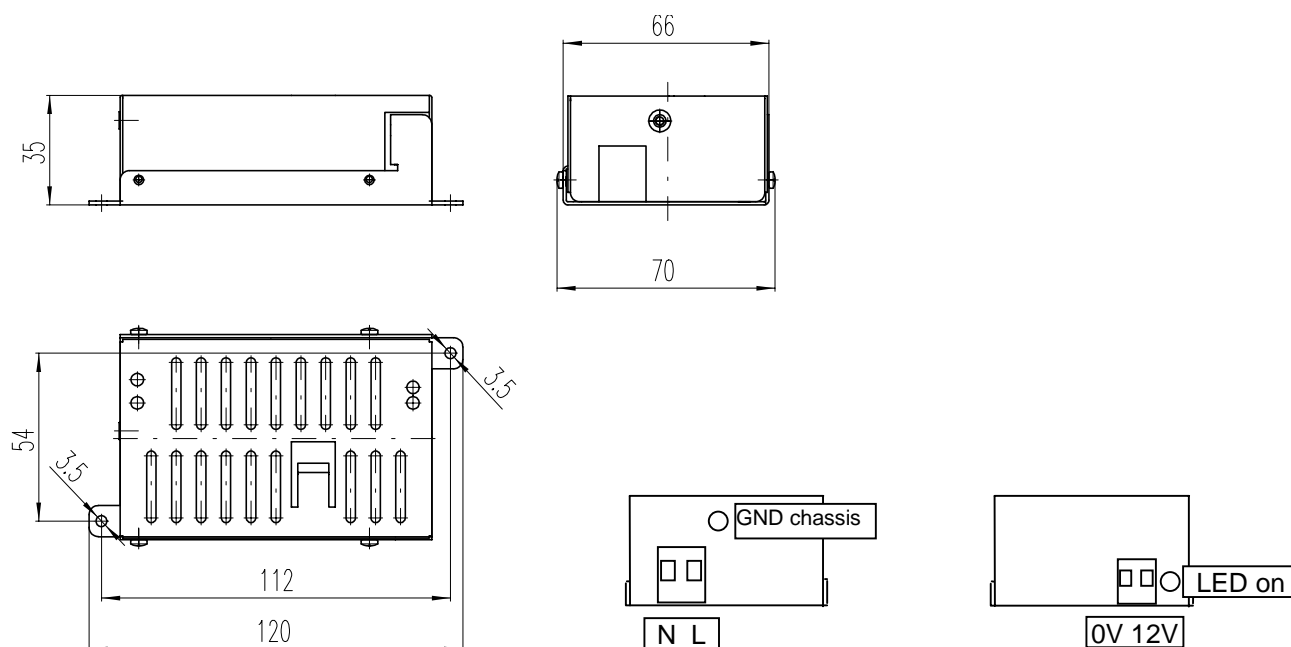


APPENDIX A. ACCESSORIES AND SPARE PARTS

A.1 ACCESSORIES

A.1.1 Power Supply

The following figure shows the switching 12V power supply, manufactured by Custom Engineering, that can be used to operate the TG35-58 printer.



Input specifications

Input voltage	100 Vac to 240 Vac
Input frequency	50 Hz to 60Hz

Output specifications

Output voltage		12 V
Output current	Minimum	0 A
	Maximum	4 A
	Peak	6 A
	Short Circuit	6 A

A.2 SPARE PARTS

RCT35X70-AF	Thermal roll paper fraud preventing
--------------------	-------------------------------------

RCT35X70-RS	Thermal roll paper back side pre-printed
	Customized pre-printed logo for 2000 rolls order minimum